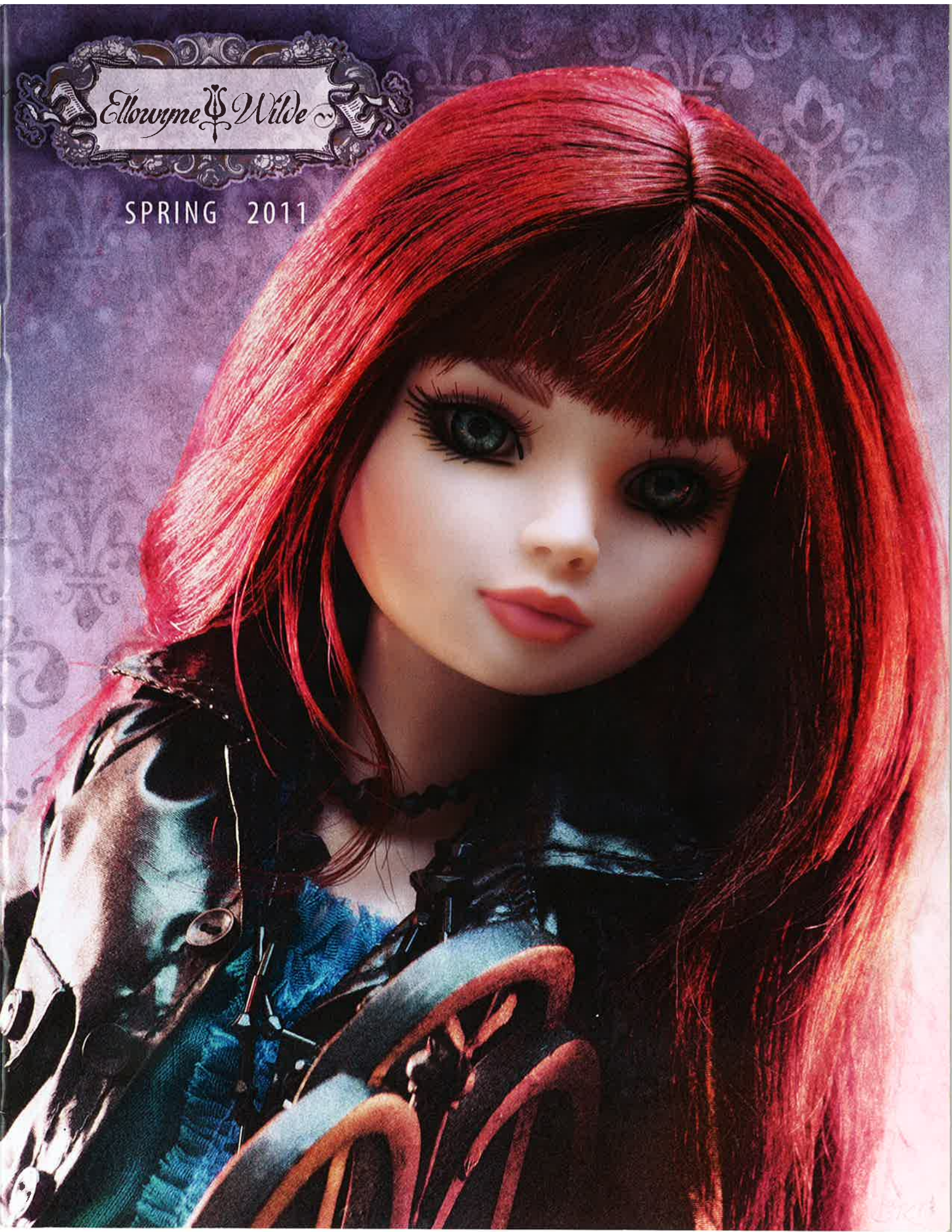


*Ellowyn & Wilde*

SPRING 2011



*ELK*



Scanty clothes and cheerful grin; Are not the style of Ellowyn

Today seems like  
the day before  
Or is it really tomorrow?  
I'm GOING IN CIRCLES  
- can't seem to escape  
My nemeses (sigh)  
called sorrow...

## Notes from the couch

My therapist, Dr. Bantam, says I suffer from chronic ennui, with just a touch of melancholy – but I guess I'm just too tired to figure it all out. I'm supposed to write down my thoughts and feelings – but really, it's not that I'm not happy, or even sad – just kind of bored.

Dr. Bantam thought I should get out more and try to enjoy myself, so I invited my best friend Prudence to go shopping. She makes me smile, and shopping at my favorite thrift stores is the one activity, other than sleeping, I really seem to enjoy. We found a great collection of separates, and some fun new shoes. You can check them out on pages 22 and 23. And the beautiful trunk I found in my Grandmother's attic is the perfect place to keep them safe from my crazy cat, Sybil.

I guess that's all I have to say for now. I'm supposed to go to a party at Amber's house tonight, but I don't know...she makes me nervous (sigh)...

*Love, Ellowyn*

**En-nui (on-we) – A feeling of weariness and dissatisfaction**

Our Guarantee: Shop with Confidence with our 100% Guarantee (see order form for details)



**NEW**

### GOING IN CIRCLES

Brown hair Ellowyn with painted green eyes. Outfit includes multi-print dress, petticoat, jacket with decoration, matching stockings, strappy shoes, and designer jewelry. Designer saddle stand included.

#011-161  
\$149.00 LE 1,000





*Darkened skies and  
blowing winds surround  
my house divine  
I'd like to venture out today,  
lest my hair unwinds;  
But lacking all the energy  
(sigh) – I feel like  
I've spent The day's quota of  
happiness shedding TEARS  
OF ENDEARMENT*

**NEW**

#### TEARS OF ENDEARMENT

Brown hair Ellowyne with blue inset eyes and applied lashes. Outfit includes pale blue dress with off-white lace overlay, matching stockings, arm gauntlets, designer jewelry, and flower basket accessory. Designer saddle stand also included.

#011-156

\$149.00 LE 1,000

## Welcome to the World of Ellowyne Wilde

She's eternally bored and ready to conquer the doll world...if only she had the energy (sigh...). Designed by renowned fashion doll artist Robert Tonner for Wilde Imagination, Ellowyne stands 16" tall from head to toe. Made of high-quality vinyl and hard plastic, she boasts 12-points of articulation for unlimited posing possibilities. Hand-painted features, rooted saran hair, and designer fabrics are the hallmarks of this temperamental girl. With a personality as unique as her wardrobe, Ellowyne is definitely the newest doll with a mood.



CALL TOLL FREE TO ORDER  
1-866-90-WILDE  
M-F 8:30 a.m. to 5:30 p.m. EST  
Shop 24/7 at  
[www.ellowynewilde.com](http://www.ellowynewilde.com)

*Ellowyne Wilde*





*A long good-bye, a sigh, a kiss  
Are things I claim to never  
miss; Save for reality-it's just  
a mirage I'll just sit and dream  
of A BON VOYAGE?*

**A BON VOYAGE?**

Blonde hair Ellowyne with brown eyes. Outfit includes chiffon dress with bottom ruffles and intricate embroidery, matching stockings, strappy shoes, necklace and a fun hair braid design. New designer saddle stand included.

#011-134  
\$129.00 LE 1,000

*Ellowyne*  *Wilde*

*My eyes are lustrous large and deep; Chopin always makes me weep*

*Amber tends to mock me  
- she makes me see bright  
red Although I try to lose her,  
she's always in my head;  
Prudence says 'ignore -  
she's a figment, just pretend'  
It works for a bit, but I must  
admit - I'm at my total  
WIT'S END!*



**NEW**

**WIT'S END**

Red hair Ellowyne with brown inset eyes and applied lashes. Outfit consists of corset with a multi-layer and multi-print dress, faux fur designer headband, matching stockings, short boots, arm gauntlets and choker. Designer saddle stand also included.

#011-157  
\$155.00 LE 1,000





I eat whipped cream by candlelight; Ms. Plath I read throughout the night



*When the Frisco sky  
turns azure blue  
And a ray of hope comes  
shining through;  
It makes me feel it's time  
to take a stand  
No more melancholy  
thoughts – no more  
TIMID TAN*

**NEW**

#### TIMID TAN

Blonde hair Ellowyne with painted green eyes. Outfit includes off-white, multi-layered fully-lined dress with appliqué and fringe decoration, arm gauntlets, lace stockings, designer shoes and jewelry. Designer saddle stand included.

#011-159  
\$135.00 LE 1,000



*SWEETLY SULLEN and  
uninspired Wanting for  
more, but always too tired;  
I need an injection of hope  
maybe change? Or perhaps a  
complete life re-arrange (sigh)*

#### SWEETLY SULLEN

Platinum hair Ellowyne with blue-green eyes. Outfit includes ruffled chiffon dress with waist tie, sparkly stockings, strappy shoes, and hair accessory. New designer saddle stand included.

#011-137  
\$124.00 LE 1,000

**CALL TOLL FREE TO ORDER**  
1-866-90-WILDE  
M-F 8:30 a.m. to 5:30 p.m. EST  
Shop 24/7 at  
[www.ellowynewilde.com](http://www.ellowynewilde.com)





*UNCOMFORTABLY BLUE  
in my outfit so fine Waiting for  
someone or something divine;  
Then a feeling of hope with a ring  
of the phone... At last, a wrong  
number-and once again I'm alone.*

#### UNCOMFORTABLY BLUE

Brown hair Ellowyne with blue eyes. Outfit includes off-white lace dress with sewn-in lace slip and applied flower decoration, matching cape with satiny bow, striped stockings, blue strappy shoes, and designer jewelry. Designer saddle stand also included.

#011-140

\$135.00 LE 1,000

**CALL TOLL FREE TO ORDER**  
1-866-90-WILDE  
M-F 8:30 a.m. to 5:30 p.m. EST  
Shop 24/7 at  
[www.ellownewilde.com](http://www.ellownewilde.com)

*Dr. Bantam would like to know; why dark clouds follow wherever I go*

*Grandmother once told  
me 'RAW EDGES are fine'  
'When placed on your  
heart they're like an  
excellent wine;'  
I think she was saying  
its okay to be me...But  
somehow I wonder (sigh) –  
what did she see?*



**NEW**

#### RAW EDGES

Red hair Ellowyne with painted blue eyes. Outfit consists of iridescent taffeta blouse, fully-lined skirt with trim, multi-purple tweed coat, stockings, boots, matching gloves, and designer jewelry. Designer saddle stand also included.

#011-160

\$149.00 LE 1,000





How indecisive can I be? There are so many sides to me...

*I recall father saying  
'always have a smile'  
'Show the world that you're  
happy – it's a personal style';  
I try to be joyful –  
but it's a force of will  
When I know deep inside  
it's just AN EMPTY THRILL*

#### AN EMPTY THRILL

Blonde hair Ellowyne with green inset eyes and applied lashes. Outfit includes off-white, layered stretch lace gown, belt, knit jacket, arm gauntlets, stockings, designer shoes, and jewelry. Designer saddle stand included.

#011-153  
\$149.00 LE 1,000



*I went shopping with Pru  
for some much needed fun  
She said a new outfit  
was needed and she'd  
choose the right one;  
From thrift shop to thrift shop,  
then some whipped cream  
and tea; And of course a new  
outfit (sigh) can you tell  
PRUDENCE DRESSED ME?*

#### PRUDENCE DRESSED ME

Raven hair Ellowyne with blue eyes. Outfit includes colorful printed top, multi-ruffled skirt, tights, socks, shoes, fun designer jewelry, and two colorful clip-on hair accessories. New designer saddle stand included.

#011-146  
\$139.00 LE 1,000

*Ellowyne & Wilde*





*I think of my mother  
and how she was told  
That being a Wilde was  
magnificent and bold;  
But my eyes see a picture  
thru a different screen  
Wilde or not, it's a  
DESOLATE DREAM*

**DESOLATE DREAMS**

Red hair Ellowyne, green eyes. Outfit includes burgundy velvet burnout dress with chiffon sleeves and flower decoration, matching stockings, shoes, and designer bracelet. New designer saddle stand included.

#011-135  
\$139.00 LE 1,000

*Ellowyne*  *Wilde*



*Sometimes I feel like  
I'm already there  
Just drifting through life –  
trying not to care;  
Each day is another –  
so much time to afford  
(sigh) I guess my new  
title should be  
CHAIRMAN OF  
THE BORED*



**CHAIRMAN OF THE BORED**

Brown hair Ellowyne with blue eyes. Outfit includes an embroidered mesh dress with bow, fully lined coat, stockings, matching boots, and designer jewelry. Designer saddle stand included.

#011-151  
\$149.00 LE 1,000



Old clocks, antiques, and wilted flowers; surround me in my darkest hours



*MY TELL-TALE HEART  
keeps beating forlorn  
For a place in the soul  
of a love that has gone;  
How I dream of a time,  
of a place, of a song  
In my chair I'll just sit...  
and wonder what has  
gone wrong...*

#### MY TELL TALE HEART

Raven hair Ellowyne with blue inset eyes, applied lashes, pale skin tone. Outfit includes chiffon and lace dress with velveteen corset, bodysuit, matching stockings, short lace-up boots, and designer jewelry. Designer saddle stand included.

#011-149  
\$155.00 LE 1,000



*Is it summer? Or is it fall?  
But really – does it  
even matter at all?  
I hope to stay happy –  
but end up with a frown  
DARK DAYS and light nights –  
it's all upside down*

#### DARK DAYS

Blonde hair Ellowyne with grey eyes. Outfit includes tank top, sweater, side-zip pleather pants, designer shoes, and jewelry. Designer saddle stand included.

#011-155  
\$139.00 LE 1,000

CALL TOLL FREE TO ORDER  
1-866-90-WILDE  
M-F 8:30 a.m. to 5:30 p.m. EST  
Shop 24/7 at  
[www.ellowynewilde.com](http://www.ellowynewilde.com)





*I'm ALONE ON SUNDAY  
and feeling quite small  
No one to talk to and  
no one to call;  
I'll just sit on my bed  
and wait for a friend  
And hope my outfit doesn't  
get wrinkled again*

#### ALONE ON SUNDAY

Dark red hair Ellowyne with brown eyes. Outfit includes peach lace dress with flower decorations, golden tights, matching shoes, arm bands, and designer jewelry. New designer saddle stand included.

#011-142  
\$139.00 LE 1,000

*Ellowyne*  *Wilde*

*flowers, lace and frippery: Help save me from my great ennui*

*I wake in the morning with  
a dash of hope  
A smile, some cheer -  
a new way to cope?  
But an hour goes by and  
I still fail to see...  
Maybe Grandmother is right -  
COMPANY LOVES MISERY...*

#### COMPANY LOVES MISERY

Dark red hair Ellowyne with brown eyes. Outfit includes embroidered coat, skirt, lace stockings, scarf, hat, muff, and boots. Designer saddle stand included.

#011-139  
\$149.00 LE 500





My pretty painted house devine: It sits upon the earthquake line

*I'm planning my day and  
feeling quite cheery  
A long walk or some  
shopping no Ellowyn dreary;  
Then I look in the mirror -  
adjust my hat just a tad...  
But the face peering back  
seems MISTAKENLY SAD*

#### MISTAKENLY SAD

Dark blonde hair, brown eyes. Outfit consists of pleated coat dress with matching belt, lace-edged slip, hat, and striped stockings. Tall black boots complete this sophisticated and elegant look. Designer display stand also included.

#011-141  
\$129.00 LE 1,000



*Dr. Bantam says 'go out -  
have fun and a smile;  
Let loose and enjoy every  
once-in-awhile;' So here  
I sit thinking-then wait for a  
sign...But honestly (sigh)  
absolutely NOTHING SPRINGS  
TO MIND!*

#### NOTHING SPRINGS TO MIND

Red hair Ellowyn with green eyes. Outfit consists of designer jeans, shirt, hooded sweater, boots, and designer jewelry. Designer saddle stand also included.

#011-143  
\$139.00 LE 1,000

CALL TOLL FREE TO ORDER  
1-866-90-WILDE  
M-F 8:30 a.m. to 5:30 p.m. EST  
Shop 24/7 at  
[www.ellownewilde.com](http://www.ellownewilde.com)



I like my life, my friends, my foes: Who has time for whipped cream and woes?



*MISS UNDERSTOOD and alone in the city Walking through crowds and not feeling so pretty; Then a call from Rufus - regarding a leak? Sigh...it's the little things that get my interests piqued.*

#### MISS UNDERSTOOD

Bright red hair Ellowyne with blue eyes. Outfit includes chifon dress with waist ribbon tie, sweater, stockings, shoes, and flower hat accessory. Designer saddle stand included

#011-145

\$139.00 LE1000

CALL TOLL FREE TO ORDER  
1-866-90-WILDE  
M-F 8:30 a.m. to 5:30 p.m. EST  
Shop 24/7 at  
[www.ellownewilde.com](http://www.ellownewilde.com)

*In school I was known to be a little unique Different and quirky – what a critique! But Ell and Rufus were my friends thick and through We'd BAND TOGETHER as the school's quirky crew*

**NEW**

#### PRUDENCE-BAND TOGETHER

Brown hair Prudence with painted green eyes. Outfit consists of drop waist dress with colored bands, matching fully-lined jacket, patterned stockings, shoes, and designer jewelry. Designer saddle stand also included.

#021-108

\$145.00 LE 350





I like to think I'm just like you; But Ellowynne says that's just not true...

*I like to be happy  
with a positive style  
A bounce in my step and  
a permanent smile;  
Wearing rose-colored glasses?  
Well I just might  
But everyone knows it's  
NOT ALL BLACK & WHITE*



**NEW**

**PRUDENCE –  
NOT ALL BLACK & WHITE**

Raven hair Prudence with inset brown eyes and applied lashes. Outfit consists of body suit, vest, and jacket with trim, patterned tights, belt, and designer shoes. Designer saddle stand also included

#021-107  
\$145.00 LE 500



**RUFUS RUTTER-UNREQUITED**

Dark brunette hair, brown eyes. Rufus comes dressed in skinny black jeans, white t-shirt, button down shirt, gray hoodie, and lace-up shoes. Designer stand included. Heart felt pain – optional.

#031-102  
\$139.00 LE 500



**BRIGHT NIGHTS, BIG CITY**

Pale blonde hair, green eyes. Outfit include off-white dress with faux pearl buttons and golden belt, matching off-white jacket, golden arm gauntlets, patterned stockings, shoes, golden headband, and designer jewelry. New designer saddle stand included.

#021-105  
\$129.00 LE 350



## ESSENTIAL ELLOWYNE, FOUR

*My image caught  
within a frame  
A saddened hope,  
a small refrain;  
"But maybe not?"  
I think once more...  
It's a new day for me -  
Essential Ellowyne, Four*

Each Essential Ellowyne, Four comes dressed in a short white designer slip with bottom ruffles, panties, sheer stockings and matching sandals. With rooted hair, styled just right, and painted green eyes, these are definitely our newest Ellowyne basics with a mood. Designer saddle stand also included.



ESSENTIAL ELLOWYNE,  
FOUR – BLONDE

#010-116 \$78



ESSENTIAL ELLOWYNE,  
FOUR – RED HEAD

#010-114 \$78



ESSENTIAL ELLOWYNE,  
FOUR – BRUNETTE

#010-115 \$78



### THE ESSENTIAL ELLOWYNE, FOUR COLLECTION

Includes all three of the NEW  
Essential Ellowyne, Four's – Blonde,  
Brunette, Redhead.

010-117 \$199  
A SAVINGS OF \$35

*"Not now...I'm in a mood."*



*Ellowyn*  *Wilde*



My pretty painted house divine; it sits upon the earthquake line

*For me it's just another day  
In which I don't have much to say;  
Should I stay inside?  
Go out? The strain...  
I'm just basic ELLOWYNE  
and FEELING DRAINED*



**NEW**

### ELLOWYNE, FEELING DRAINED

With inset green/grey eyes, applied lashes, and the new pale skin tone, she's definitely our newest Ellowyne with several moods! She comes dressed in a short lace outfit with fun stockings and shoes. Two separate wigs made of the highest quality fibers are included (raven and dark red). A girl can't have too many unique looks! Designer saddle stand also included.

#010-113  
\$114.00

CALL TOLL FREE TO ORDER  
1-866-90-WILDE  
M-F 8:30 a.m. to 5:30 p.m. EST  
Shop 24/7 at  
[www.ellowynewilde.com](http://www.ellowynewilde.com)





### WILDE ROSE VANITY & STOOL

Designer vanity is constructed of sturdy wood and resin with a delicately sculpted frame. Lightly stained with tiny roses and leaves surrounding the mirror and base of vanity. Complete with real working drawers for storage and a velvet-covered vanity stool. The perfect place for Ellowyne to reflect..

#015-101 \$110.00



### SYBIL-PLAYING NICE?

Sybil comes to you as one of her more playful personalities. Plush faux fur and hand painted features - band aids not included.

#015-115 - \$24.00

*Ellowyne & Wilde*

I just love being ESSENTIAL AMBER so beautifully WIGGED OUT!

*I always try and look my best  
It's a lot of work - with little rest;  
But being so popular - well,  
I must never pout.  
I just love being ESSENTIAL  
AMBER - so beautifully  
WIGGED OUT!*



### ESSENTIAL AMBER WIGGED OUT

Meet Amber Stanhope - Ellowyne's best frienemy! Amber has inset blue eyes with applied lashes and two designer wigs. Born on the same day as Ellowyne and Prudence, under suspicious circumstances, Essential Amber - Wigged Out is dressed in a black top and bottom, with stockings, shoes, and an attitude to match! Designer saddle stand also included.

#040-101  
\$114.00





To brighten up my weary days; I try and dress in different ways

*I woke up with a start –  
didn't know what to do  
Am I happy? I thought –  
or AM I BLUE?  
Then the next thing I knew  
I was back in my bed  
With the dream I just had  
still stuck in my head...*



**NEW**

AM I BLUE  
[outfit only]

Outfit includes striped jacquard blouse, matching skirt with tie, knit jacket with decoration, metallic mesh stockings, open-toed shoes, and designer jewelry.

#013-143  
77.00 LE 1,000

## ELLOWYNE'S CLOSET

### Outfits for Ellowyne, Prudence, and Amber

#### MY FAVORITE QUOTES

"If anybody starts using me as scenery, I'll return to New York."

– Grace Kelly

"There is no life I know to compare with pure imagination. Living there, you'll be free if you truly wish to be."

– Willy Wonka

"First, I'm trying to prove to myself that I'm a person. Then maybe I'll convince myself that I'm an actress."

– Marilyn Monroe

"Some cause happiness wherever they go; others whenever they go."

– Oscar Wilde

"A sure way to lose happiness, I found, is to want it at the expense of everything else."

– Bette Davis

"Blessed is the man who expects nothing, for he shall never be disappointed."

– Alexander Pope

"If you wish to forget anything on the spot, make a note that this thing is to be remembered."

– Edgar Allan Poe

CALL TOLL FREE TO ORDER  
1-866-90-WILDE  
M-F 8:30 a.m. to 5:30 p.m. EST  
Shop 24/7 at

[www.ellowynewilde.com](http://www.ellowynewilde.com)





*In Grandmother's house  
I sit and dream  
And hope for a life  
that's less serene;  
Perhaps a job, or a  
book club I'll find ~  
To help create those  
familiar TIES THAT BIND*

**NEW**

**TIES THAT BIND**  
[outfit only]

Outfit includes a designer dress with lace trim and beading, attached petticoat, lace arm gauntlets, matching stockings, faux suede shoes, and designer jewelry.

#013-139  
79.00 LE 1,000

*Elwynne & Wilde*

*We drink our tea from silver trays, While kitty eats a mouse and plays*

*Happiness and smiles,  
well they're not meant for me  
They tend to be quite a luxury;  
I'm trying to change –  
to let go of this sorrow  
But STOLEN MOMENTS  
of levity?  
Well, maybe tomorrow. . .*



**NEW**

**STOLEN MOMENTS**  
[outfit only]

Outfit includes white dotted swiss multi-layered dress with lace trim, arm gauntlets, stockings, designer lace-up short boots, and a decorated straw hat.

#013-140  
\$74.00 LE 1,000



My spirits wilt just like a rose, My pretty poem is at a close



*Another day of therapy...  
can Dr. Bantam seal my fate?  
I better leave the house soon –  
I don't want to be too late;  
I'll force myself to smile –  
a look of confidence and grace,  
And dress appropriately  
for my destination –  
in ENNUI & OLD LACE*

**NEW**

ENNUI & OLD LACE  
[outfit only]

This outfit features a black mesh, multi-layered dress with lace trim and back bow, matching stockings, arm gauntlets, decorated headband, matching faux suede shoes and designer jewelry.

#013-141  
\$74.00 LE 1,000



*It seems a little  
FUR REAL to me  
To walk around without ennui;  
A little bored and slightly jaded  
It's my life – half way out there  
and half way faded...*

**NEW**

FUR REAL  
[outfit only]

Outfit consists of a printed, long-sleeved dress, gloves, short designer boots, matching jewelry, and a lined faux fur wrap

#013-136  
\$74.00 LE 1,000

CALL TOLL FREE TO ORDER  
1-866-90-WILDE  
M-F 8:30 a.m. to 5:30 p.m. EST  
Shop 24/7 at  
[www.ellownewilde.com](http://www.ellownewilde.com)





**SPRING AWAKENING**  
[outfit only]

Outfit consists of a printed dress, matching jacket with trim and flower decoration, gloves, tights, decorated shoes, and designer jewelry.

#013-133  
\$74.00 LE 1000



**STILL LIFE**  
[outfit only]

Outfit includes a multi-print layered dress, sweater, bodysuit, decorated hat, tights, shoes, and designer jewelry.

#013-134  
\$79.00 LE 1000

*Ellowyn & Wilde*

I like to be happy with a positive style; A bounce in my step and a permanent smile



*We went shopping today  
for something new  
A special look that was  
perfect and TAILORED  
FOR PRU;  
But hours later we just  
couldn't agree On a look  
that said 'Prudence' but  
selected by me...*

**NEW**

**TAILORED FOR PRU**  
[outfit only]

Outfit includes a knit top, matching knit skirt, pants, fully-lined tailored jacket with golden buttons, and boots.

#013-144  
\$79.00 LE 500



Sweetly pained I feel inspired, But no...perhaps not... I'm just too tired



*HEART BURN tugs  
at my heart and soul  
And brings me to a  
place of old;  
Father's laugh and  
Mother's smile  
Are things I dream of –  
all the while...*

**NEW**

**HEART BURN**  
[outfit only]

Outfit includes an orange, multi-print fully-lined brocade jacket with matching belt, dress, patterned tights, matching short boots and designer jewelry.

#013-142  
\$79.00 LE 1,000

CALL TOLL FREE TO ORDER  
1-866-90-WILDE  
M-F 8:30 a.m. to 5:30 p.m. EST  
Shop 24/7 at  
[www.ellownewilde.com](http://www.ellownewilde.com)



**NEVER LOOKED SO GOOD**  
[outfit only]

Outfit consists of corduroy dress pants, shirt, cravat with decoration, buttoned vest, fully lined velveteen coat, and shoes.

#033-101  
\$77.00 LE 350



**COMBATING FATIGUE**  
[outfit only]

Outfit consists of silk jumpsuit, matching belt, body suit, arm gauntlets, hooded sweater jacket, boots, and designer jewelry.

#013-132  
\$79.00 LE 500



# Ellowyne's Accessory Boutique

Ellowyne's Designer Trunk

It's the perfect place to store all of Ellowyne's outfits and thrift shop separates -- and keep them safe from Sybil! Comes complete with beautiful brocade fabrics, tassel, 6 hangers and lots of storage space.

015-118 \$215



(Doll and clothing shown not included)



## Ennui Thrift Shop Collection

016-138 \$252

A SAVINGS of Over \$46

Includes all 11 Separates shown!

*It makes me happy in a strange sort of way To shop for clothes that others gave away; A skirt, a jacket, a dress or some tops Small gifts to me from my favorite THRIFT SHOPS*



Ennui Purple Print Blouse #016-129 \$24

Ennui Purple Ruffled Skirt #016-131 \$28



Ennui Orange Print Blouse #016-127 \$24

Ennui Pink Ruffled Skirt #016-130 \$28



Ennui Green Print Blouse #016-135 \$24

Ennui Green Ruffled Skirt #016-135 \$28



Ennui Yellow Vest #016-128 \$22

Ennui Yellow Pants #016-133 \$24



Ennui Green Jacket #016-136 \$38

Ennui Pink Pants #016-132 \$24



Ennui Blue Satin Jacket #016-137 \$38



## Ennui Shoe Collection 014-129

All 3 pair \$63

A SAVINGS of \$10

A. A Grey Day 014-128 \$24

B. Dark and Moody 014-127 \$24

C. A Step Too Far? 014-126 \$25



## Hanging by a Thread Collection

016-151 \$375  
A SAVINGS of \$68  
Includes all 12 Pieces

**NEW**

*My Grandma's portrait in a frame, That sits upon the window pane;  
Is filled with treasures I adore, from Grandma and the dollar store*

**NEW**



Raw Ruffles Dress  
#016-140 \$39

**NEW**



Blustery Peacoat  
#016-146 \$42



**NEW**

Crossed Purposes Jacket  
#016-144 \$38

Distress Call Dark Jeans  
#016-149 \$29



**NEW**

Warding Off A Chill  
Poncho  
#016-147 \$42

Distress Call Blue Jeans  
#016-148 \$29



**NEW**

Inclement Jacket  
#016-145 \$42

Distress Call Black  
Jeans  
#016-150 \$29



**NEW**

Hanging by a Thread  
Seafoam Jacket  
#016-141 \$38



**NEW**

Hanging by a Thread  
Fuchsia Jacket  
#016-142 \$38



## Foot Loose Shoe Collection

014-139 \$128  
A SAVINGS of \$24  
Includes all 6 Pair

**NEW**

A. Back Bow Pumps  
014-136 \$24

B. Tied Up Pumps  
014-134 \$24

C. Ladder Boots  
014-135 \$26

D. Jet Ankle Boots  
014-137 \$24

E. Black Crush Boots  
014-132 \$28

F. Shimmer Wedge  
Sandals  
014-138 \$26



**NEW**

Round & Round Dress  
#016-139 \$39



**NEW**

Trouble? Jacket  
#016-143 \$38

*Ellowyn & Wilde*



**Born:** April 24, 1924  
**Place of Birth:** Ipswich, England  
 (in the attic of Barkley Manor)

*The weather on the night of Evangeline's birth was as expected. The wind was howling, the moon was full, and the doctor was unavailable.*

And so begins the story of Evangeline Ghastly. Where most call her unfortunate; she thinks of herself as misunderstood. Beginning with a mysterious diary entry, a pet skunk named Mouette, and fashions straight out of a Victorian novel, Evangeline is definitely... *a whole other story!*

Created by designer Joe Petrollese and sculpted by renowned fashion doll artist Robert Tonner, Evangeline is crafted entirely of the finest pale luminescent resin, and now in the highest-quality vinyl too.

Completely ball-jointed, she comes complete with hand-painted features and a designer wardrobe befitting any mortician's assistant.

Evangeline comes to you straight from the attic of Barkley Manor in Ipswich, England, across from the local cemetery, prepared to share her quirky tales, unique fashion sense, and mysterious life in one of the oldest towns in England.

You can find out more about Evangeline Ghastly, view her designer fashions, and read her diary entries at:

[www.EvangelineGhastly.com](http://www.EvangelineGhastly.com)

### **A** Imaginary Life **NEW**

Vinyl Evangeline, inset teal eyes\* with applied lashes, and golden rooted hair. She's approximately 17" tall and completely ball jointed, with delicate hand painted features. Evangeline comes dressed in a fully-lined, beautiful gold embroidered sequined mesh dress with a matching jeweled turban, armbands, stockings, designer shoes, and jewelry. LE 350 *Designer stand sold separately.* #211-113 \$175

### **B** Dark Desire **NEW**

Vinyl Evangeline, inset green eyes\* with applied lashes, black rooted hair with white stripes. Approx. 17" tall and completely ball jointed, with distinctive hand painted features. She comes dressed wearing a fully-lined pleather bodice with lacings, a decorated, fully-lined lace jacket with glittery bat collar, satin skirt with organza ribbon and bows, stockings, designer boots, and jewelry. LE 350 *Designer stand sold separately.* #211-112 \$175

**Evangeline Ghastly**  
*She's a whole other story...*

**NEW**



**A**

**NEW**



**B**

**NEW**



*\*Eyes are not changeable on vinyl dolls.*

*Designer stand sold separately, see page 31.*



NEW



D

NEW



D

NEW



E

### C Beautiful Nightmare NEW

Vinyl Evangeline, inset grey eyes\* with applied lashes, with a changeable platinum wig. She's approximately 17" tall and completely ball jointed, with delicate hand painted features. She comes dressed in fully-lined grey dress with silver and grey embroidered mesh trim, ribbons and beads. Designer jewelry, stockings, and matching shoes completes this beautiful look.

*Designer stand sold separately.*

LE 350 #211-111 \$175

### D Timeless Evangeline NEW

Our newest basic vinyl Evangeline with inset blue eyes\*, applied lashes, and two changeable wigs - Raven, and Black with White streaks. She's approximately 17" tall and completely ball jointed with hand-painted features and comes dressed in a designer black and white fully-lined camisole with lace ruffles and ribbon tie, thigh high stockings with garters, and matching designer shoes. It's the perfect ensemble for reading late at night, preparing a 5-course dinner for one, or even bathing Mouette!!

### E Haunted Melody NEW

Vinyl Evangeline, inset violet eyes\* with applied lashes, platinum rooted hair. Approx. 17" tall and completely ball-jointed, with delicate hand painted features. She comes dressed in a pink and black fully-lined dress with mesh overlay, ruffled bottom, and matching trims, a matching lace jacket with chiffon ruffles and ribbon bows, stockings, shoes, and designer jewelry. *Designer stand sold separately.*

LE 350 #211-110 \$175

### F Mortimer Mort

Meet Mortimer Mort! He's a mortician-in-training and Evangeline's future spouse? Mortimer stands approximately 19-1/2" tall, has dark brown hair and blue inset eyes. Crafted of 100% high-quality vinyl, Mortimer is the perfect companion for Evangeline - handsome, friendly, with solid ties to the Ipswich community. He comes dressed in the perfect mortician's uniform - pinstripe pants, shirt, vest, twill coat, socks, shoes, pocket watch, and designer spectacles!

#231-101 \$180 *Not Shown: Top Hat*



F

CALL TOLL FREE TO ORDER

1-866-90-WILDE

M-F 8:30 a.m. to 5:30 p.m. EST

www.EvangelineGhastly.com



## G Forever Ghastly

She's completely ball jointed and crafted of high-quality, luminescent resin, and stands almost 19" tall. Hand-painted features and changeable, inset pale blue eyes - with a flame red wig made of the highest quality fibers - complete her ghastly look. *Forever Ghastly* arrives dressed in a black velvet two-piece outfit trimmed with satin and chiffon, jacket, designer brooch, gloves, stockings, velvet tri-corner hat adorned with feathers and satin bow, and vintage inspired ankle strap shoes. She's fully prepared for cleaning out the cobwebs in the attic - she may seem overdressed for such a task, but she feels perfectly at home this way. *Designer stand sold separately.* LE 350 #221-105 \$425

## H Eternally Yours (outfit only) NEW

An outfit meant for Valentine's Day? Perhaps - if only she had finished it in time... This striking, fully-lined white dress features designer buttons and crystals and is enhanced with a red jacquard corset and ruffles. It also includes a special designer choker she found hidden in an attic dresser, under a photo of a young girl that appeared to look a lot like her. She wondered who it could be? *Note: Outfit is interchangeable between both resin and vinyl Evangelines - Shoes sold separately.* LE 300 #223-123 \$90

## I Gothic Romance (outfit only) NEW

The perfect outfit for a romantic evening - if only Mortimer would notice. This outfit consists of a purple, fully-lined charmeuse dress, a purple and gold patterned coat with beaded trim, decorated sleeves with tassels, and matching lining, and designer jewelry. *Note: Outfit is interchangeable between both resin and vinyl Evangelines - Shoes sold separately.* LE 350 #223-121 \$110

## J Grey as the Moors (outfit only) NEW

It appears the long, cold winter months have inspired Evangeline to create a new outfit she's sure will catch Mortimer's eye. Outfit features a beautiful grey, fully-lined charmeuse dress, designer jewelry - pieces she found hidden in the attic while searching for Mouette - and a black and silver embroidered mesh cape with hood. *Note: Outfit is interchangeable between both resin and vinyl Evangelines - Shoes sold separately.* LE 300 #223-122 \$110







K



L



L

### **K** A Cold Wind (*outfit only*)

This stretch velvety gown trimmed in gold gives Evangeline comfort during her winter strolls through Ipswich. Faux fur trimmed sleeves with matching lace, stockings, and designer jewelry complete the look. *Note: Outfit fits both resin and vinyl Evangeline - Shoes sold separately, see pg. 31.* LE 300 #223-116 \$90

### **L** Widow's Walk (*outfit only*)

A stunning fully lined, black floor-length gown with matching chiffon overlay. The gown features a lace-up front bodice and halter-style neckline. A coordinating paisley printed floor length pleated coat with lavender lining and dramatic sleeves completes the look. *Note: Outfit fits both resin and vinyl Evangeline - Shoes sold separately, see pg. 31.* LE 300 #223-119 \$110

### **M** Mourning Glory (*outfit only*)

This flowing orange chiffon gown with a corset trimmed in gold gives Evangeline comfort during her lonely strolls through Ipswich. Jeweled designer brooch, stockings, and designer jewelry completes the look. *Note: Outfit fits both resin and vinyl Evangeline - Shoes sold separately, see pg. 31.* LE 300 #223-120 \$90



M



N

### **N** Midnight Coat

#226-103 \$58

### **O** Midnight Blue Coat

#226-104 \$50

### **P** Cover of Darkness Cape

#223-118 \$62



O



P

CALL TOLL FREE TO ORDER

1-866-90-WILDE

M-F 8:30 a.m. to 5:30 p.m. EST

[www.EvangelineGhastly.com](http://www.EvangelineGhastly.com)



**Q** Velvet Evenings Coat **NEW**  
#226-136 \$78

**R** Calm Before the Storm Coat **NEW**  
#226-143 \$89

### Evangeline's Attic Separates

Evangeline spends most of her time alone in the attic of Barkley Manor, but she doesn't mind at all. A self-taught seamstress, she sews her beautiful outfits and separates, and wears them wherever she goes... whether visiting relatives in the cemetery, or just walking through town. Separates are interchangeable between both the vinyl and resin Evangelines!

- a** Beyond Sunset Coat #226-119 \$62
- b** Dawn to Dusk Coat #226-120 \$62
- c** Dawn to Dusk Trimmed Coat #226-122 \$48
- d** Eternal Lace Skirt #226-115 \$58
- e** Neverending Blouse #226-121 \$48
- f** Neverending Lace Skirt #226-114 \$58
- g** Beyond Sunset Coat Dress #226-118 \$58
- h** Eternal Ribbon Skirt #226-116 \$58
- i** Eternal Purse #226-125 \$25
- j** Beyond Sunset Purse #226-128 \$25
- k** A Windy Evening #226-126 \$48
- l** Eternal Tulle Skirt Set #226-127 \$46



CALL TOLL FREE TO ORDER  
**1-866-90-WILDE**  
M-F 8:30 a.m. to 5:30 p.m. EST  
[www.EvangelineGhastly.com](http://www.EvangelineGhastly.com)





NEW

1



NEW

2



NEW

3



NEW

4



NEW

6

7



NEW

8

5



NEW

10

## New Attic Separates **NEW**

Each Victorian-inspired New Attic Separate is crafted of the highest quality fabrics and trims left behind in the attic by cherished Ghastly relatives. Each is created especially for Evangeline Ghastly, comes packaged separately, and fits both resin and vinyl versions of Evangeline.

- 1 Midnight Fog Capelet **NEW**  
#226-137 \$62
- 2 Candlelight Blouse **NEW**  
#226-140 \$58
- 3 Cobwebs & Tulle Bustierre **NEW**  
#226-139 \$58
- 4 Wilted Rose Jacket **NEW**  
#226-138 \$62
- 5 Cemetery Stroll Skirt **NEW**  
#226-145 \$58
- 6 Mortuary Madness Blouse **NEW**  
#226-141 \$62
- 7 Dark Illusions Skirt **NEW**  
#226-148 \$72
- 8 Shrouded in Darkness Blouse **NEW**  
#226-147 \$58
- 9 A Darkened Sky Skirt **NEW**  
#226-142 \$65
- 10 Dark as Night Jacket **NEW**  
#226-146 \$62

**Attic Collection, Three**  
Includes all 10  
New Attic Separates  
#226-149 \$520  
**A SAVINGS OF \$97!**

For additional beautiful  
Evangeline Ghastly items,  
visit:  
[www.EvangelineGhastly.com](http://www.EvangelineGhastly.com)



## Evangeline's Wigs

Change Evangeline's look with these eight unique wigs, each of the highest quality fibers and made exclusively for both resin and vinyl Evangeline!

- 1 Ebony Epitaph #225-105 \$20
- 2 Moon Glow #225-104 \$25
- 3 Windblown #225-103 \$25
- 4 Everlasting #226-131 \$28
- 5 Evening Flame #225-125 \$25
- 6 After Sunset #225-130 \$25
- 7 Eternal Dark #226-130 \$28

### Dark Night Wig Collection

Includes wigs 1, 2 & 3

#225-106 \$57

A SAVINGS OF \$13

### 8 Top of the Evening Hat

#226-104 \$46

### T Raining Bats & Skunks **NEW**

#226-104 \$46

CALL TOLL FREE TO ORDER  
1-866-90-WILDE

M-F 8:30 a.m. to 5:30 p.m. EST  
[www.EvangelineGhastly.com](http://www.EvangelineGhastly.com)



2



3



4



5



6



8



**NEW**

T



7







## U Evangeline's Attic Armoire

The perfect place for all of Evangeline's designer outfits, separates, and shoes! This beautiful Victorian-inspired armoire is big enough for Evangeline, her outfits and accessories. There's even a spot for Mouette and Bella in one of the drawers. Comes complete with six hangers. #225-126 \$225

## V Designer Hangers (set of 6)

Straight from Evangeline's attic is this set of 6 acrylic hangers - they're the perfect way to display all of Evangeline's designer outfits and separates, and keep them looking beautiful. This set of 6 acrylic hangers fit perfectly in Evangeline's Attic Armoire. #015-118-AFG01 \$12

## W Mouette

Evangeline's favorite pet and best friend! Completely ball-jointed in luminescent resin, 5" tall, hand-painted features and dressed in her favorite removable odorless ensemble. #225-108 \$110



a Plum Paces #225-127 \$22

Shoes to fit vinyl Evangeline.

b Bow Ties #225-128 \$22

Shoes to fit vinyl Evangeline.

b Bow Ties II #225-131 \$22

Shoes to fit resin Evangeline.

c Golden Eternity #225-129 \$22

Shoes to fit resin Evangeline.

c Golden Eternity II #225-132 \$22

Shoes to fit vinyl Evangeline.

d A Dark Sole #225-123 \$25

Boots to fit vinyl Evangeline.

e Tombstone Tappers #225-113 \$22

Shoes to fit resin Evangeline.

f Scarlet Steps #225-122 \$22

Shoes to fit resin Evangeline.

g Moonlight Pumps #225-115 \$22

Shoes to fit resin Evangeline.

h Midnight Blue Tappers #225-118 \$22

Shoes to fit vinyl Evangeline.

## X Evangeline Display Stand

A display stand created especially for Evangeline! Features a sturdy base with Evangeline's name and a saddle-type holder. #225-114 \$15

## Y Night Vision

This unique set of acrylic eyes were designed exclusively for Evangeline Ghastly. Create the look you desire with eyes of Lavender, Green and Brown. #225-107 \$24





**WILDE  
IMAGINATION™**

P.O. Box 1027  
Mullica Hill, NJ 08062

Presort  
Standard  
U.S. Postage  
**PAID**  
Richmond, VA  
Permit #2367

\*\*\*\*\*AUTO\*\*SCH 3-DIGIT 125 4211

Shauna Perry  
PO Box 4410  
Kingston, NY 12402-4410



*Evangeline Ghastly*  
*She's a whole other story...*

# A Cautionary Tale

**NEW**



She's crafted of high-quality, luminescent resin, stands almost 19" tall, and is completely ball-jointed. *Evangeline Ghastly - A Cautionary Tale* comes dressed in her latest attic creation. Her facial features are completely hand-painted, with changeable, inset green/brown eyes with applied lashes, and arrives wearing a stunning deep burgundy wig made of the highest quality fibers.

She comes dressed in a grey jacquard fully-lined jacket and skirt, each trimmed in coordinating faux fur. A matching hat with veil, stockings, and designer shoes completes this sophisticated look. Exhausted after months of sewing, she's hoping to debut her new look at the upcoming Ipswich Cemetery re-dedication ceremony - that's if she doesn't have to work that day. *Designer stand sold separately.*

LE 350 #221-106 \$425

**Call Toll Free To Order**

**1-866-90-WILDE**

**M-F 8:30 a.m. to 5:30 p.m. EST**

**[www.EvangelineGhastly.com](http://www.EvangelineGhastly.com)**