



WINTER 2011







## Notes from the couch

My therapist, Dr. Bantam, says I suffer from chronic ennui, with just a touch of melancholy – but I guess I'm just too tired to figure it all out. I'm supposed to write down my thoughts and feelings – but really, what's to feel? I much prefer to spend time with my best friend, Prudence Moody.

Dr. Bantam thinks Prudence is a good influence on me. She likes to shop, and go line-dancing, and well, just have fun. I do tend to smile more when I'm with her, so I guess Dr. Bantam has a point. You can check out Pru's newest look on Pg. 13. She said it was inspired by me...but I'm not so sure. She has her own sense of style that fits her quirky personality just perfectly.

I guess that's all I have to say for now. Rufus is coming over soon to fix some mysterious scratches on Grandmother's favorite chair. I think Sybil had something to do with it...but who knows?

*Love, Ellowyn*

**En-nui (on-we) – A feeling of weariness and dissatisfaction**

Our Guarantee: Shop with Confidence with our 100% Guarantee (see order form for details)

Scanty clothes and cheerful grin; Are not the style of Ellowyn



*I started the day hopeful and bright  
A LANGUID vision of everything right;  
Maybe I'll travel to Paris,  
or perhaps Madrid?  
(sigh) Or just stay in the house – and pretend I did...*

**NEW**

**LANGUID**

Red hair Ellowyn with painted green eyes. Outfit includes a delicate print chiffon dress with matching lace trim and bow, striped stockings, pantyhose, matching lace hat, arm bands, and designer shoes. Designer saddle stand also included.

#011-168

\$145.00 LE 1,000







*I'm FEELING FATIGUE  
but its only high noon  
And Prudence and Rufus  
will be over here soon;  
They thought a day out  
would help my ennui  
I'll put on my new smile ~  
will it help? Well...we'll see*

**NEW**

#### FEELING FATIGUE

Brown hair Ellowyn with inset aqua eyes and applied lashes. Outfit includes dress with overlay, lined faux leather jacket, matching scarf, belt, stockings, lace-up boots, and arm gauntlets. Designer saddle stand also included.

#011-170

\$149.00 LE 1,000

## Welcome to the World of Ellowyn Wilde

She's eternally bored and ready to conquer the doll world...if only she had the energy (sigh...). Designed by renowned fashion doll artist Robert Tonner for Wilde Imagination, Ellowyn stands 16" tall from head to toe. Made of high-quality vinyl and hard plastic, she boasts 12-points of articulation for unlimited posing possibilities. Hand-painted features, rooted saran hair, and designer fabrics are the hallmarks of this temperamental girl. With a personality as unique as her wardrobe, Ellowyn is definitely the newest doll with a mood.



CALL TOLL FREE TO ORDER  
1-866-90-WILDE  
M-F 8:30 a.m. to 5:30 p.m. EST  
Shop 24/7 at  
[www.ellownewilde.com](http://www.ellownewilde.com)

*Ellowyn Wilde*



My eyes are lustrous large and deep; Chopin always makes me weep



*Sometimes I feel like  
I'm already there Just drifting  
through life – trying not to care;  
Each day is another –  
so much time to afford  
(sigh) I guess my new  
title should be CHAIRMAN  
OF THE BORED*

#### CHAIRMAN OF THE BORED

Brown hair Ellowyne with blue eyes. Outfit includes an embroidered mesh dress with bow, fully lined coat, stockings, matching boots, and designer jewelry. Designer saddle stand included.

#011-151

\$149.00 LE 1,000

CALL TOLL FREE TO ORDER  
1-866-90-WILDE  
M-F 8:30 a.m. to 5:30 p.m. EST  
Shop 24/7 at  
[www.ellownewilde.com](http://www.ellownewilde.com)



*Dr. Bantam called today to  
totally CHECK ON ME  
I really think she's worried  
I'm still suffering from ennui;  
I told her I was okay –  
and proceeded to hang  
up the phone But as I did,  
I heard her say: 'Ellowyne –  
don't spend the day alone...'*



**NEW**

#### CHECK ON ME

Blonde hair Ellowyne with painted green eyes. Outfit consists of a checked dress with collar, cuffs, and buttons, matching belt, cap, stockings, and designer short boots. Designer saddle stand also included.

#011-169

\$149.00 LE 1,000





I eat whipped cream by candlelight; Ms. Plath I read throughout the night



*I'm POSITIVELY NEGATIVE  
that Amber is my friend We  
try and act polite each day –  
but really – we both pretend;  
So I question why she's call-  
ing me for dinner and a show  
I'm wrapped in conflicting  
emotions – should I even go?*

**NEW**

#### POSITIVELY NEGATIVE

Red hair Ellowyne with painted blue eyes. Outfit includes knit dress, sweater, matching knit stockings, lace-up boots, matching hat, and fringed scarf. Designer saddle stand included.

#011-172  
\$155.00 LE 1,000



*I went shopping with Pru  
for some much needed fun  
She said a new outfit  
was needed and she'd  
choose the right one;  
From thrift shop to thrift shop,  
then some whipped cream  
and tea; And of course a new  
outfit (sigh) can you tell  
**PRUDENCE DRESSED ME?***

#### PRUDENCE DRESSED ME

Raven hair Ellowyne with blue eyes. Outfit includes colorful printed top, multi-ruffled skirt, tights, socks, shoes, fun designer jewelry, and two colorful clip-on hair accessories. New designer saddle stand included.

#011-146  
\$139.00 LE 1,000

*Ellowyne Wilde*





**UNCOMFORTABLY BLUE**  
*in my outfit so fine Waiting for  
 someone or something divine;  
 Then a feeling of hope with a ring  
 of the phone... At last, a wrong  
 number-and once again I'm alone.*

**UNCOMFORTABLY BLUE**

Brown hair Ellowyne with blue eyes. Outfit includes off-white lace dress with sewn-in lace slip and appliqued flower decoration, matching cape with satiny bow, striped stockings, blue strappy shoes, and designer jewelry. Designer saddle stand also included.

#011-140  
 \$135.00 LE 1,000

**CALL TOLL FREE TO ORDER**  
 1-866-90-WILDE  
 M-F 8:30 a.m. to 5:30 p.m. EST  
 Shop 24/7 at  
[www.ellownewilde.com](http://www.ellownewilde.com)

**WOEFULLY BEWITCH-  
 ING and cheerfully sad**  
*A new way to play  
 dress-up and not feel  
 so bad; Perhaps I'll pre-  
 tend to be Pru for the  
 day And put on a mask  
 of fun and all play...*

**NEW**

**WOEFULLY BEWITCHING**

Raven hair Ellowyne with inset lavender eyes and applied lashes. Outfit includes a purple satiny dress with hooped skirt and organza draped sleeves, matching hat, slip, striped stockings, boots, designer jewelry, and a decorated mask. Designer saddle stand also included.

#011-167  
 \$155.00 LE 1,000





How indecisive can I be? There are so many sides to me...

*Grandmother once told me 'RAW EDGES are fine' 'When placed on your heart they're like an excellent wine;' I think she was saying its okay to be me...But somehow I wonder (sigh) – what did she see?*



#### RAW EDGES

Red hair Ellowyne with painted blue eyes. Outfit consists of iridescent taffeta blouse, fully-lined skirt with trim, multi-purple tweed coat, stockings, boots, matching gloves, and designer jewelry. Designer saddle stand also included.

#011-160

\$149.00 LE 1,000



*Is it summer? Or is it fall?  
But really – does it even matter at all?  
I hope to stay happy –  
but end up with a frown  
DARK DAYS and light nights –  
it's all upside down*

#### DARK DAYS

Blonde hair Ellowyne with grey eyes. Outfit includes tank top, sweater, side-zip pleather pants, designer shoes, and jewelry. Designer saddle stand included.

#011-155

\$139.00 LE 1,000

*Ellowyne & Wilde*





*I'm ALONE ON SUNDAY  
and feeling quite small  
No one to talk to and  
no one to call;  
I'll just sit on my bed  
and wait for a friend  
And hope my outfit doesn't  
get wrinkled again*

#### ALONE ON SUNDAY

Dark red hair Ellowyne with brown eyes. Outfit includes peach lace dress with flower decorations, golden tights, matching shoes, arm bands, and designer jewelry. New designer saddle stand included.

#011-142

\$139.00 LE 1,000

*Ellowyn*  *Wilde*

Dr. Bantam would like to know; Why dark clouds follow wherever I go



*Today seems like  
the day before  
Or is it really tomorrow?  
I'm GOING IN CIRCLES  
- can't seem to escape  
My nemeses (sigh)  
called sorrow...*



#### GOING IN CIRCLES

Brown hair Ellowyne with painted green eyes. Outfit includes multi-print dress, petticoat, jacket with decoration, matching stockings, strappy shoes, and designer jewelry. Designer saddle stand included.

#011-161

\$149.00 LE 1,000



Old clocks, antiques, and wilted flowers; surround me in my darkest hours

*Amber tends to mock me  
– she makes me see bright  
red Although I try to lose her,  
she's always in my head;  
Prudence says 'ignore –  
she's a figment, just pretend'  
It works for a bit, but I must  
admit – I'm at my total  
WIT'S END!*



#### WIT'S END

Red hair Ellowyne with brown inset eyes and applied lashes. Outfit consists of corset with a multi-layer and multi-print dress, faux fur designer headband, matching stockings, short boots, arm gauntlets and choker. Designer saddle stand also included.

#011-157

\$155.00 LE 1,000



*I'm planning my day and  
feeling quite cheery A long  
walk or some shopping no  
Ellowyne dreary; Then I look  
in the mirror - adjust my hat  
just a tad...But the face  
peering back seems  
MISTAKENLY SAD  
MISTAKENLY SAD*

Dark blonde hair, brown eyes.  
Outfit consists of pleated coat dress  
with matching belt, lace-edged slip,  
hat, and striped stockings. Tall black  
boots complete this sophisticated  
and elegant look. Designer display  
stand also included.

#011-141

\$129.00 LE 1,000

CALL TOLL FREE TO ORDER  
1-866-90-WILDE  
M-F 8:30 a.m. to 5:30 p.m. EST  
Shop 24/7 at  
[www.ellownewilde.com](http://www.ellownewilde.com)



flowers, lace and frippery: Help save me from my great envy



#### TIMID TAN

Blonde hair Ellowyne with painted green eyes. Outfit includes off-white, multi-layered fully-lined dress with appliqué and fringe decoration, arm gauntlets, lace stockings, designer shoes and jewelry. Designer saddle stand included.

#011-159

\$135.00 LE 1,000



#### NOTHING SPRINGS TO MIND

Red hair Ellowyne with green eyes. Outfit consists of designer jeans, shirt, hooded sweater, boots, and designer jewelry. Designer saddle stand also included.

#011-143

\$139.00 LE 1,000

Ellowyn  Wilde

*In school I was known  
to be a little unique  
Different and quirky –  
what a critique!  
But Ell and Rufus were my  
friends thick and through  
We'd BAND TOGETHER  
as the school's quirky crew*

#### PRUDENCE-BAND TOGETHER

Brown hair Prudence with painted green eyes. Outfit consists of drop waist dress with colored bands, matching fully-lined jacket, patterned stockings, shoes, and designer jewelry. Designer saddle stand also included.

#021-108

\$145.00 LE 350





My pretty painted house devine: It sits upon the earthquake line

*Throwing a party is  
always so fun  
I love looking gorgeous –  
better than everyone;  
But it's time for my  
guests and there's no  
one in sight My party,  
I fear, could be A DARK  
& STORMY NIGHT?*

A DARK AND  
STORMY NIGHT

**NEW**

Red hair Amber with green inset eyes and applied lashes. She comes dressed in a black long-sleeved bodysuit, jacket with ribbon tie front, matching ruffled layered skirt, patterned stockings, shoes, and designer jewelry. Designer stand and attitude included.

#041-103  
\$160.00 LE350



RUFUS RUTTER-UNREQUITED

Dark brunette hair, brown eyes. Rufus comes dressed in skinny black jeans, white t-shirt, button down shirt, gray hoodie, and lace-up shoes. Designer stand included. Heart felt pain – optional.

#031-102  
\$139.00 LE 500



PRUDENCE –  
NOT ALL BLACK & WHITE

Raven wigged Prudence with winset brown eyes and applied lashes. Outfit consists of body suit, vest, and jacket with trim, patterned tights, belt, and designer shoes. Designer saddle stand also included

#021-107  
\$145.00 LE 500





## ESSENTIAL ELLOWYNE, FOUR

*My image caught  
within a frame  
A saddened hope,  
a small refrain;  
"But maybe not?"  
I think once more...  
It's a new day for me -  
Essential Ellowyne, Four*

Each Essential Ellowyne, Four comes dressed in a short white designer slip with bottom ruffles, panties, sheer stockings and matching sandals. With rooted hair, styled just right, and painted green eyes, these are definitely our newest Ellowyne basics with a mood. Designer saddle stand also included.



ESSENTIAL ELLOWYNE,  
FOUR – BLONDE

#010-116 \$78

### THE ESSENTIAL ELLOWYNE, FOUR COLLECTION

Includes all three of the  
Essential Ellowyne, Four's – Blonde,  
Brunette, Redhead.

010-117 \$199  
A SAVINGS OF \$35

### WILDE ROSE VANITY & STOOL

Designer vanity is constructed of sturdy wood and resin with a delicately sculpted frame. Lightly stained with tiny roses and leaves surrounding the mirror and base of vanity. Complete with real working drawers for storage and a velvet-covered vanity stool. The perfect place for Ellowyne to reflect..

#015-101 \$110.00

### SYBIL-PLAYING NICE?

Sybil comes to you as one of her more playful personalities. Plush faux fur and hand painted features - band aids not included.

#015-115 - \$29.00



ESSENTIAL ELLOWYNE,  
FOUR – RED HEAD

#010-114 \$78



ESSENTIAL ELLOWYNE,  
FOUR – BRUNETTE

#010-115 \$78



*Ellowyne & Wilde*



I'm just ESSENTIAL  
PRUDENCE, THREE and  
I'm totally WIGGED OUT

*I'm wrapped in  
stripes and feeling  
quite cheery  
Long wig or short?  
No Ellowyn dreary!  
I'm ready to go danc-  
ing with nary a pout  
I'm just ESSENTIAL  
PRUDENCE, THREE  
and I'm totally  
WIGGED OUT*



**NEW**  
ESSENTIAL  
PRUDENCE THREE –  
WIGGED OUT

Prudence has inset blue eyes with applied lashes and comes dressed in a striped bodysuit, stockings, socks and buckled shoes. Two separate wigs made of the highest quality fibers are included (raven and platinum) and each gives Prudence a fun, quirky look. Designer saddle stand also included.

#020-103  
\$114.00



A



B



C

Foot Loose  
Collection  
\$114.00



CALL TOLL FREE TO ORDER  
1-866-90-WILDE  
M-F 8:30 a.m. to 5:30 p.m. EST  
Shop 24/7 at  
[www.ellownewilde.com](http://www.ellownewilde.com)



E'S  
T  
or  
dence,  
er

QUOTES

s, I'd never

ments when I  
edom drives  
lities to either  
anywhere."

– Anish Kapoor

"A girl should be two things: classy  
and fabulous."

– Coco Chanel

"Deep into that darkness peering, long  
I stood there, wondering, fearing,  
doubting, dreaming dreams no mortal  
ever dared to dream before."

– Edgar Allan Poe

"The human heart has hidden treasures,  
In secret kept, in silence sealed; The  
thoughts, the hopes, the dreams, the  
pleasures, Whose charms were broken  
if revealed."

– Charlotte Bronte

"A dreamer is one who can only find his  
way by moonlight, and his punishment is  
that he sees the dawn before the rest of  
the world."

– Oscar Wilde

"Have a heart that never hardens, and  
a temper that never tires, and a touch  
that never hurts."

– Charles Dickens

Elowyn & Wilde

To brighten up my weary days; I try and dress in different ways



*In OLIVE DRAB  
I sit and wait  
For something to come  
and seal my fate;  
What that might be?  
Well...I'm not quite sure  
But I hope it has  
something to do with  
haute couture...*

**NEW**

**OLIVE DRAB**  
(OUTFIT ONLY)

This outfit consists of an olive green  
dress, matching slip, belt, arm bands  
ribbed knit tights, faux suede short  
boots, and designer jewelry.

#013-145 LE 1,000  
\$79.00



We drink our tea from silver trays, While kitty eats a mouse and plays

A BAY BREEZE blows  
through my open door  
It makes me wonder  
what life might have in  
store; The salty air, the  
beckoning sky  
A future bright – well,  
maybe – but why?



**NEW**

**BAY BREEZE**  
(outfit only)

This outfit features a pleated skirt, blouse, matching decorated jacket, socks, designer shoes, and hat.

#013-148 LE 1,000  
\$89.00

CALL TOLL FREE TO ORDER  
1-866-90-WILDE  
M-F 8:30 a.m. to 5:30 p.m. EST  
Shop 24/7 at  
[www.ellownewilde.com](http://www.ellownewilde.com)



**Foot Loose  
Shoe Collection**

014-139 \$128

A SAVINGS of \$24

Includes all 6 Pair



A. Back Bow Pumps  
014-136 \$24

B. Ladder Boots  
014-135 \$26

C. Black Crush Boots  
014-132 \$28

D. Tied Up Pumps  
014-134 \$24

E. Jet Ankle Boots  
014-137 \$24

F. Shimmer Wedge Sandals  
014-138 \$26



*My spirits wilt just like a rose, My pretty poem is at a close*

*I woke up with a start –  
didn't know what to do  
Am I happy? I thought –  
or AM I BLUE?  
Then the next thing I knew  
I was back in my bed  
With the dream I just had  
still stuck in my head...*

AM I BLUE  
[outfit only]

Outfit includes striped jacquard blouse, matching skirt with tie, knit jacket with decoration, metallic mesh stockings, open-toed shoes, and designer jewelry.

#013-143  
77.00 LE 1,000



*It seems a little  
FUR REAL to me  
To walk around without ennui;  
A little bored and slightly jaded  
It's my life – half way out there  
and half way faded...*

FUR REAL  
[outfit only]

Outfit consists of a printed, long-sleeved dress, gloves, short designer boots, matching jewelry, and a lined faux fur wrap

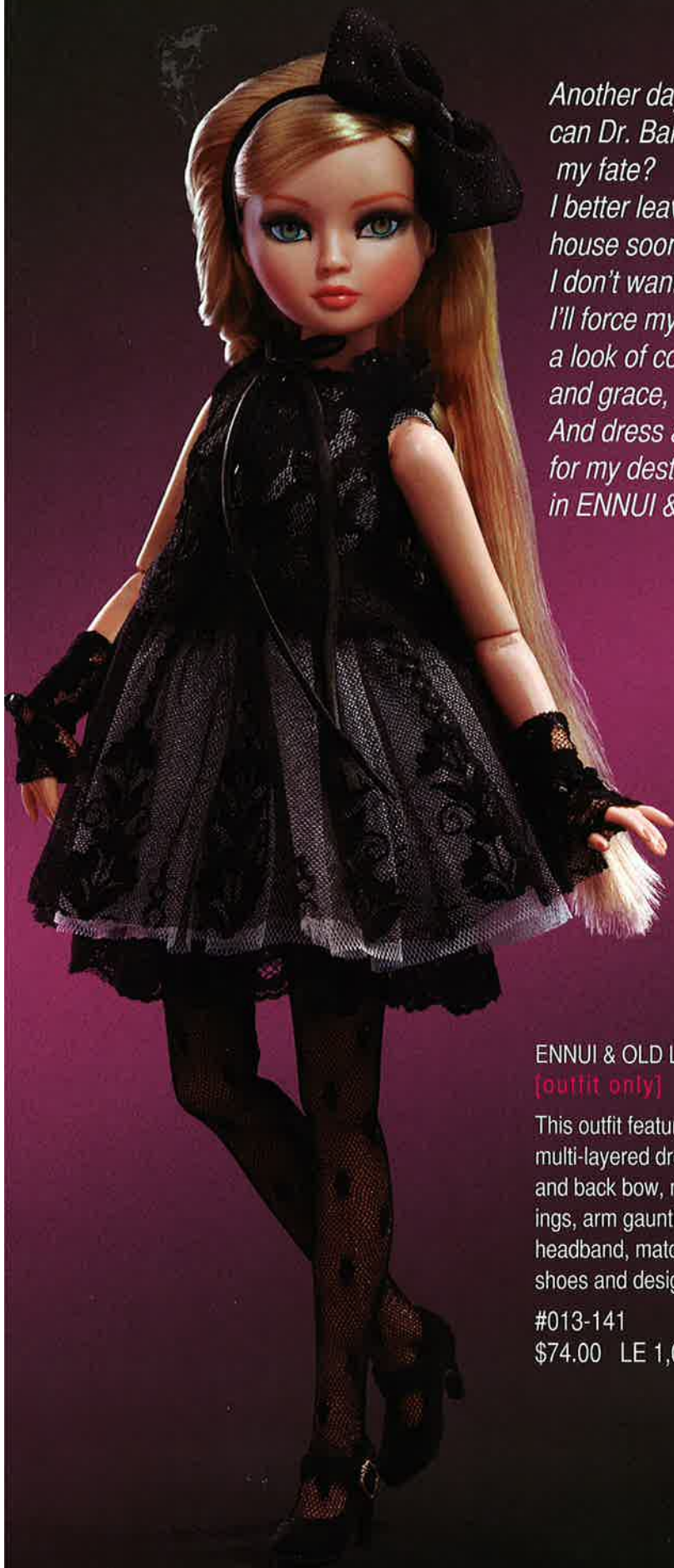
#013-136  
\$74.00 LE 1,000



CALL TOLL FREE TO ORDER  
1-866-90-WILDE  
M-F 8:30 a.m. to 5:30 p.m. EST  
Shop 24/7 at  
[www.ellownewilde.com](http://www.ellownewilde.com)



Boredom is my greatest foe; I wallow in a well of woe



*Another day of therapy...  
can Dr. Bantam seal  
my fate?  
I better leave the  
house soon –  
I don't want to be too late;  
I'll force myself to smile –  
a look of confidence  
and grace,  
And dress appropriately  
for my destination –  
in ENNUI & OLD LACE*

**ENNUI & OLD LACE**  
[outfit only]

This outfit features a black mesh, multi-layered dress with lace trim and back bow, matching stockings, arm gauntlets, decorated headband, matching faux suede shoes and designer jewelry.

#013-141  
\$74.00 LE 1,000



*In Grandmother's house  
I sit and dream  
And hope for a life  
that's less serene;  
Perhaps a job, or a  
book club I'll find ~  
To help create those  
familiar TIES THAT BIND*

**TIES THAT BIND**  
[outfit only]

Outfit includes a designer dress with lace trim and beading, attached petticoat, lace arm gauntlets, matching stockings, faux suede shoes, and designer jewelry.

#013-139  
79.00 LE 1,000

*Elowynne & Wilde*





**SPRING AWAKENING**

[outfit only]

Outfit consists of a printed dress, matching jacket with trim and flower decoration, gloves, tights, decorated shoes, and designer jewelry.

#013-133

\$74.00 LE 1000



**STILL LIFE**

[outfit only]

Outfit includes a multi-print layered dress, sweater, bodysuit, decorated hat, tights, shoes, and designer jewelry.

#013-134

\$79.00 LE 1000

*Ellowyn & Wilde*

Perhaps a cup of tea I'll pour; and sit, and stare, and ponder some more

*Happiness and smiles,  
well they're not meant for me  
They tend to be quite a luxury;  
I'm trying to change –  
to let go of this sorrow  
But **STOLEN MOMENTS**  
of levity?  
Well, maybe tomorrow. . .*



**STOLEN MOMENTS**

[outfit only]

Outfit includes white dotted swiss multi-layered dress with lace trim, arm gauntlets, stockings, designer lace-up short boots, and a decorated straw hat.

#013-140

\$74.00 LE 1,000



Sweetly pained I feel inspired, But no perhaps not I'm just too tired



*HEART BURN tugs  
at my heart and soul  
And brings me to a  
place of old;  
Father's laugh and  
Mother's smile  
Are things I dream of –  
all the while...*

**HEART BURN**  
[outfit only]

Outfit includes an orange, multi-print fully-lined brocade jacket with matching belt, dress, patterned tights, matching short boots and designer jewelry.

#013-142  
\$79.00 LE 1,000

CALL TOLL FREE TO ORDER  
1-866-90-WILDE  
M-F 8:30 a.m. to 5:30 p.m. EST  
Shop 24/7 at  
[www.ellownewilde.com](http://www.ellownewilde.com)



**NEVER LOOKED SO GOOD**  
[outfit only]

Outfit consists of corduroy dress pants, shirt, cravat with decoration, buttoned vest, fully lined velveteen coat, and shoes.

#033-101  
\$77.00 LE 350



**TAILORED FOR PRU**  
[outfit only]

Outfit includes a knit top, matching knit skirt, pants, fully-lined tailored jacket with golden buttons, and boots.

#013-144  
\$79.00 LE 500



# Ellowyne's Accessory Boutique

*It makes me  
happy in a strange  
sort of way  
To shop for clothes  
that others gave  
away;  
A skirt, a jacket, a  
dress or some tops  
Small gifts to me  
from my favorite  
THRIFT SHOPS*



(Doll and clothing shown not included)



## Ellowyne's Designer Trunk

It's the perfect place to store all of Ellowyne's outfits and thrift shop separates – and keep them safe from Sybil! Comes complete with beautiful brocade fabrics, tassel, 6 hangers and lots of storage space.

015-118      \$215

## Hanging by a Thread Collection

016-151    \$375    A SAVINGS of \$68

Includes all 12 Pieces



Blustery Peacoat  
#016-146    \$42



Hanging by a Thread  
Seafoam Jacket  
#016-141    \$38



Hanging by a Thread  
Fuchsia Jacket  
#016-142    \$38



Inclement Jacket  
#016-145    \$42  
Distress Call Black  
Jeans  
#016-150    \$29



Warding Off A Chill  
Poncho  
#016-147    \$42  
Distress Call Blue  
Jeans  
#016-148    \$29



Crossed Purposes  
Jacket  
#016-144    \$38  
Distress Call Dark  
Jeans  
#016-149    \$29



Round & Round Dress  
#016-139    \$39



Raw Ruffles Dress  
#016-140    \$39



Trouble? Jacket  
#016-143    \$38



**Something Serious Thrift Shop Collection**

016-174 \$444 A SAVINGS of Over \$78!

Includes all 19 Pieces

For more fun  
Ellowyn Boutique Accessories,  
please visit

[www.ellowynwilde.com](http://www.ellowynwilde.com)



Cardigan Funk Shimmer  
016-164 \$26



Cardigan Funk Striped  
016-163 \$26



Cardigan Funk Leopard  
016-165 \$26



Something Serious  
Camel Skirt  
016-167 \$22



Frills Printed Top  
016-158 \$26



Frills Shimmer Top  
016-159 \$26



Frills Black Top  
016-160 \$26



Something Serious  
Black Skirt  
016-168 \$22



Wild Thing Black Vest  
016-161 \$30



Wild Thing Gold Vest  
016-162 \$30



Pulled Together Cross-  
Dyed Skirt  
016-169 \$26



Pulled Together  
Leopard Skirt  
016-170 \$26



Something Serious Red  
Skirt  
016-166 \$22



Flippy Black Skirt  
016-173 \$25



Flippy Lavender Skirt  
016-171 \$25



Flippy Sea Foam Skirt  
016-172 \$25



Cut Short Neutral Top Set  
016-153 \$38



Cut Short Pastel Top Set  
016-154 \$38



Cut Short Printed Top Set  
016-152 \$38





**New**

## Meet Amelia Thimble -

the newest line from Wilde Imagination. She stands just 4" tall, crafted of high-quality resin, and fully articulated for unlimited posing possibilities. She comes with a changeable wig and inset eyes, the cutest wardrobe and accessories, and furniture straight out of a seamstress' dream! Amelia is sure to steal your heart - and needles, thread, buttons ...

She's a tiny girl...with big dreams!

*she's cute as a button*



### Basic Amelia

Standing a mere 4" tall, with inset brown eyes, hand-painted features, and a dark brown wig with matching hair bows, Basic Amelia is just sew cute! Completely ball-jointed and crafted of high-quality resin, Amelia features 12-points of articulation for unlimited posing possibilities. She comes dressed in a light blue dress with ribbon straps, matching bloomer pants, and shoes.

510-101 \$145



### Sprinkled With Love (BAKING SET)

Amelia's talents aren't just limited to the sewing room - she also enjoys creating mischief in the kitchen! This adorable set includes a white pinafore apron with lace and ribbon trim, and a matching baker's hat. A pan of just-baked button-shaped 'cookies' and a decorated 'cupcake' are the final touches to this adorable set. *Doll not included.*

LE 250 513-101 \$45



### Rags Set

Meet RAGS - Amelia Thimble's loyal friend. Crafted of resin with hand-painted features, Rags stands approximately 1-1/2" tall and comes with a pink collar and leash, her very own button pillow and food bowl. She's the perfect friend for Amelia Thimble!

515-101 \$39

### Cute As A Button

Amelia has inset green eyes, hand-painted features, and a raven changeable wig made of the highest quality fibers. Completely ball-jointed and standing a mere 4" tall, she features 12-points of articulation for unlimited posing possibilities. She comes dressed in a dress featuring a white top and checked bottom with the most perfect of trims - including a heart-shaped button, of course! Matching hair bows and shoes completes this 'Cute As A Button' look.

LE 300 511-102 \$160

**Call Toll Free to Order**  
1-800-966-WILDE  
ameliathimble.com





**Sew Enchanting Set**

This enchanting set includes a fairy princess dress with mesh decorated overlay, matching hat, fairy wings, shoes, and Amelia's very own special doll. LE 250 513-103 \$65



**A Stitch in Time Carry-All**

Amelia's size makes her the perfect travel doll, and this fabric carry-all is just the place for Amelia and her favorite things. This fun carry-all comes decorated with ribbon and a button, and zips open to reveal several storage compartments for Amelia and some of her favorite outfits and accessories. A fabric handle makes it easy to take with you on your own sewing adventures. Dimensions: Closed - 5"H x 8"W Open - 10"H x 8"W 515-105 \$60



**Buttons & Bows Table & Chairs Set**

The sewing room provides lots of possibilities for Amelia to relax - and she takes full advantage! Crafted of quality resin and each piece painted by hand, this fun set includes a unique spool-shaped table, two matching chairs utilizing buttons and bows, a set of button-shaped plates and two cups of 'hot chocolate!' 515-103 \$60



**Buttons & Bows Bed Set**

Amelia loves to create mischief... but even she needs a place to rest! This bed set is perfect for our little girl and her best friend Rags. Crafted of quality resin with each piece hand-painted, the set features a button-inspired bed, complete with matching mattress and pillow, her favorite blanket, and cozy rug. Sweet dreams! Note: Rags and teddy bear pictured not included. 515-104 \$85

**Cute As A Button Collection**  
 This fun collection features several of Amelia's favorite things! Includes: Basic Amelia; Amelia-Cute As A Button; A Sweet Notion Outfit Set; Sew Enchanting Set; Sprinkled With Love Baking Set; and Rags - of course!  
**A SAVINGS of \$80!**  
 516-101 \$454



**A Sweet Notion (OUTFIT SET)**

Amelia's mom stitched together the perfect set of outfits for her adventures in the sewing kit! Includes three tiny designer ensembles - each with matching shoes and perfect details. Included in the set is a blue print dress with decorated top, slip and matching shoes; a knit dress with ribbon straps, striped knit pants, matching hat and shoes; and an adorable yellow dress with lace trim, matching hat, and shoes. Also includes a cute teddy bear (not shown). LE 250 513-102 \$80





**Born:** April 24, 1924

**Place of Birth:** Ipswich, England  
(in the attic of Barkley Manor)

*The weather on the night of Evangeline's birth was as expected. The wind was howling, the moon was full, and the doctor was unavailable.*

And so begins the story of Evangeline Ghastly. Where most call her unfortunate; she thinks of herself as misunderstood. Beginning with a mysterious diary entry, a pet skunk named Mouette, and fashions straight out of a Victorian novel, Evangeline is definitely... a whole other story!

Created by designer Joe Petrollese and sculpted by renowned fashion doll artist Robert Tonner, Evangeline is crafted entirely of the finest pale luminescent resin, and now in the highest-quality vinyl too.

Completely ball-jointed, she comes complete with hand-painted features and a designer wardrobe befitting any mortician's assistant.

Evangeline comes to you straight from the attic of Barkley Manor in Ipswich, England, across from the local cemetery, prepared to share her quirky tales, unique fashion sense, and mysterious life in one of the oldest towns in England.

You can find out more about Evangeline Ghastly, view her designer fashions, and read her diary entries at:

[www.EvangelineGhastly.com](http://www.EvangelineGhastly.com)

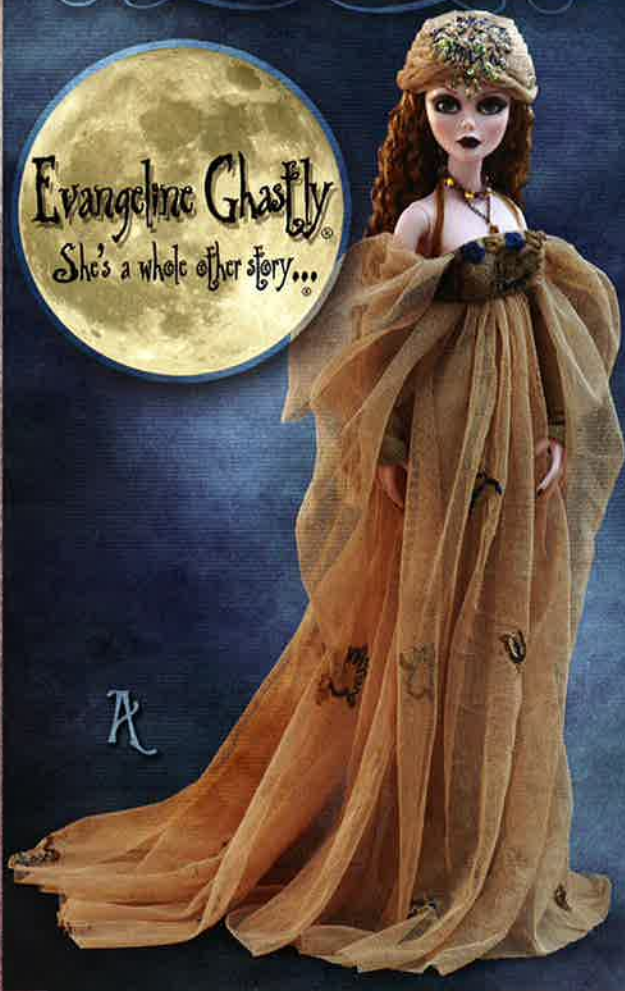
### **A** Imaginary Life

Vinyl Evangeline, inset teal eyes\* with applied lashes, and golden rooted hair. She's approximately 17" tall and completely ball jointed, with delicate hand painted features. Evangeline comes dressed in a fully-lined, beautiful gold embroidered sequined mesh dress with a matching jeweled turban, armbands, stockings, designer shoes, and jewelry. LE 350  
Designer stand sold separately. #211-113 \$175

### **B** Wilted English Rose **NEW**

Vinyl Evangeline, inset grey eyes\* with applied lashes and a changeable raven wig. She's approximately 17" tall and completely ball jointed, with delicate hand painted features. She comes dressed in red top and skirt with white insets and ruffles, faux fur trim and black beads, a matching decorated hat, stockings, shoes, and designer jewelry. LE 350  
Designer stand sold separately. #211-117 \$190

**Evangeline Ghastly**  
She's a whole other story...



\*Eyes are not changeable on vinyl dolls.

Designer stand sold separately, see page 31.

**NEW**

**B**



**NEW**







D



D

## C Dandy of Death **NEW**

A stunning vinyl Evangelina with inset blue eyes, applied lashes, and a changeable platinum wig. She's approximately 17" tall and completely ball jointed, with delicate hand painted features. She comes dressed in a body suit, golden cravat and trim, lined brocade vest with golden buttons, pants, velvet jacket with ribbon ties, hat, pantyhose, and faux suede boots with laces and silver grommets. LE 350 Designer stand sold separately. #211-118 \$190

## D Timeless Evangelina

Our newest basic vinyl Evangelina with inset blue eyes\*, applied lashes, and two changeable wigs - Raven, and Black with White streaks. She's approximately 17" tall and completely ball jointed with hand-painted features and comes dressed in a designer black and white fully-lined camisole with lace ruffles and ribbon tie, thigh high stockings with garters, and matching designer shoes. It's the perfect ensemble for reading late at night, preparing a 5-course dinner for one, or even bathing Mouette!! #210-104 \$140



E

## E Dark Desire

Vinyl Evangelina, inset green eyes\* with applied lashes, black rooted hair with white stripes. Approx. 17" tall and completely ball jointed, with distinctive hand painted features. She comes dressed wearing a fully-lined pleather bodice with lacings, a decorated, fully-lined lace jacket with glittery bat collar, satin skirt with organza ribbon and bows, stockings, designer boots, and jewelry. LE 350 Designer stand sold separately. #211-112 \$175

## F Mortimer Mort

Meet Mortimer Mort! He's a mortician-in-training and Evangelina's future spouse? Mortimer stands approximately 19-1/2" tall, has dark brown hair and blue inset eyes. Crafted of 100% high-quality vinyl, Mortimer is the perfect companion for Evangelina - handsome, friendly, with solid ties to the Ipswich community. He comes dressed in the perfect mortician's uniform - pinstripe pants, shirt, vest, twill coat, socks, shoes, pocket watch, and designer spectacles!

#231-101 \$180 Not Shown: Top Hat



F

CALL TOLL FREE TO ORDER

1-866-90-WILDE

M-F 8:30 a.m. to 5:30 p.m. EST

www.EvangelinaGhastly.com



## G Forever Ghastly

She's completely ball jointed and crafted of high-quality, luminescent resin, and stands almost 19" tall. Hand-painted features and changeable, inset pale blue eyes - with a flame red wig made of the highest quality fibers - complete her ghastly look. Forever Ghastly arrives dressed in a black velvet two-piece outfit trimmed with satin and chiffon, jacket, designer brooch, gloves, stockings, velvet tri-corner hat adorned with feathers and satin bow, and vintage inspired ankle strap shoes. She's fully prepared for cleaning out the cobwebs in the attic - she may seem overdressed for such a task, but she feels perfectly at home this way. Designer stand sold separately. LE 350 #221-105 \$425

## H A Cautionary Tale

She's crafted of high-quality, luminescent resin, stands almost 19" tall, and is completely ball-jointed. Evangeline Ghastly - A Cautionary Tale comes dressed in her latest attic creation. Her facial features are completely hand-painted, with changeable, inset green/brown eyes with applied lashes, and arrives wearing a stunning deep burgundy wig made of the highest quality fiber. She comes dressed in a grey jacquard fully-lined jacket and skirt, each trimmed in coordinating faux fur. A matching hat with veil, stockings, and designer shoes completes this sophisticated look. Exhausted after months of sewing, she's hoping to debut her new look at the upcoming Ipswich Cemetery re-dedication ceremony - that's if she doesn't have to work that day. Designer stand sold separately. LE 350 #221-106 \$425

## I Graveside Picnic (outfit only)

Evangeline created this new ensemble for her outing to the Ipswich library - to research her family tree. This outfit consists of a boucle top trimmed with faux fur, matching belt with antique golden buckle, a bronze pleather skirt, and a beautifully decorated hat. Note: outfit is interchangeable between both resin and vinyl Evangelines - Shoes sold separately. LE 350 #223-125 \$110

## J Smoke & Mirrors (outfit only)

The perfect outfit for a leisurely evening walking the moors? This outfit consists of a beautiful dress with layers of blue/grey mesh decorated with ribbons and roses, a matching jacquard corset with ribbon lacing, matching lining, petticoat, and choker. Note: outfit is interchangeable between both resin and vinyl Evangelines - Shoes sold separately. LE 350 #223-124 \$110







NEW

K



L



M



N

**NEW**  
**K Well preserved (outfit only)**

It's the perfect outfit for every stylish Mortician-in-Training. Evangelina knew that Mortimer needed a new look for his new job at Mort's Mortuary, so she stayed up very late one evening sewing his newest outfit. Includes a shirt, tie, vest, cuffed pants, socks, shoes, and an apron - of course! LE 350 #233-101 \$85

**L Eternally Yours (outfit only)**

An outfit meant for Valentine's Day? Perhaps - if only she had finished it in time... This striking, fully-lined white dress features designer buttons and crystals and is enhanced with a red jacquard corset and ruffles. It also includes a special designer choker she found hidden in an attic dresser, under a photo of a young girl that appeared to look a lot like her. She wondered who it could be? Note: Outfit is interchangeable between both resin and vinyl Evangelines - Shoes sold separately. LE 300 #223-123 \$90

**M Gothic Romance (outfit only)**

The perfect outfit for a romantic evening - if only Mortimer would notice. This outfit consists of a purple, fully-lined charmeuse dress, a purple and gold patterned coat with beaded trim, decorated sleeves with tassels, and matching lining, and designer jewelry. Note: Outfit is interchangeable between both resin and vinyl Evangelines - Shoes sold separately. LE 350 #223-121 \$110

**N Grey as the Moors (outfit only)**

It appears the long, cold winter months have inspired Evangelina to create a new outfit she's sure will catch Mortimer's eye. Outfit features a beautiful grey, fully-lined charmeuse dress, designer jewelry - pieces she found hidden in the attic while searching for Mouette - and a black and silver embroidered mesh cape with hood. Note: Outfit is interchangeable between both resin and vinyl Evangelines - Shoes sold separately. LE 300 #223-122 \$110

CALL TOLL FREE TO ORDER  
**1-866-90-WILDE**  
M-F 8:30 a.m. to 5:30 p.m. EST  
[www.EvangelinaGhastly.com](http://www.EvangelinaGhastly.com)



**Q Velvet Evenings Coat**  
#226-136 \$78

**R Calm Before the Storm Coat**  
#226-143 \$89

### Evangeline's Attic Separates

Evangeline spends most of her time alone in the attic of Barkley Manor, but she doesn't mind at all. A self-taught seamstress, she sews her beautiful outfits and separates, and wears them wherever she goes... whether visiting relatives in the cemetery, or just walking through town. Separates are interchangeable between both the vinyl and resin Evangelines!

- a Dawn to Dusk Coat**  
#226-120 \$62
- b Cover of Darkness Cape**  
#223-118 \$62
- c Mourning Hat & Wig Set** **NEW**  
#226-151 \$36
- d Eternal Purse**  
#226-125 \$25
- e Beyond Sunset Purse**  
#226-128 \$25
- f Dawn to Dusk Trimmied Coat**  
#226-122 \$48



CALL TOLL FREE TO ORDER  
1-866-90-WILDE

M-F 8:30 a.m. to 5:30 p.m. EST  
[www.EvangelineGhastly.com](http://www.EvangelineGhastly.com)





1



2



3



4



6



8



5



10

## Attic Separates

Each Victorian-inspired Attic Separate is crafted of the highest quality fabrics and trims left behind in the attic by cherished Ghastly relatives. Each is created especially for Evangeline Ghastly, comes packaged separately, and fits both resin and vinyl versions of Evangeline.

- 1 Midnight Fog Capelet  
#226-137 \$62
- 2 Candlelight Blouse  
#226-140 \$58
- 3 Cobwebs & Tulle Bustierre  
#226-139 \$58
- 4 Wilted Rose Jacket  
#226-138 \$62
- 5 Cemetery Stroll Skirt  
#226-145 \$58
- 6 Mortuary Madness Blouse  
#226-141 \$62
- 7 Dark Illusions Skirt  
#226-148 \$72
- 8 Shrouded in Darkness Blouse  
#226-147 \$58
- 9 A Darkened Sky Skirt  
#226-142 \$65
- 10 Dark as Night Jacket  
#226-146 \$62

### Attic Collection, Three

Includes all 10

New Attic Separates

#226-149 \$520

A SAVINGS OF \$97!



For additional beautiful  
Evangeline Ghastly items,  
visit:

[www.EvangelineGhastly.com](http://www.EvangelineGhastly.com)



## Evangeline's Wigs

Change Evangeline's look with these seven unique wigs, each of the highest quality fibers and made exclusively for both resin and vinyl Evangeline!

- 1 Ebony Epitaph, Too #225-140 \$29
- 2 Windblown, Too #225-142 \$29
- 3 Moon Glow, Too #225-141 \$29
- 4 Everlasting #226-131 \$28
- 5 Evening Flame #225-125 \$25
- 6 After Sunset #225-130 \$25
- 7 Eternal Dark #226-130 \$28

**NEW**  
**Dark Night, Too Collection**  
 Includes wigs 1, 2 & 3  
 #225-143 \$74  
**A SAVINGS OF \$13**

**8 Top of the Evening Hat**  
 #226-104 \$46

**T Raining Bats & Skunks**  
 #226-104 \$46

**CALL TOLL FREE TO ORDER**  
**1-866-90-WILDE**

M-F 8:30 a.m. to 5:30 p.m. EST  
[www.EvangelineGhastly.com](http://www.EvangelineGhastly.com)







**U** **Evangeline's Attic Armoire**  
 The perfect place for all of Evgangeline's designer outfits, separates, and shoes! This beautiful Victorian-inspired armoire is big enough for Evgangeline, her outfits and accessories. There's even a spot for Mouette and Bella in one of the drawers. Comes complete with six hangers.  
 #225-126 \$225

**V** **Rest in Peace Carry-All** **NEW**  
 It's the perfect carry-all for everything Evgangeline. This beautiful coffin-inspired carry-all is large enough for Evgangeline, a few outfits, and accessories. There's even a little pocket for Mouette to travel with her. Covered in a beautiful black vinyl and lined in a soft satiny fabric, this unique carry-all features several storage pockets and a designer adjustable strap. It zippers shut for a safe and quiet environment.  
 20"H x 11"W x 5-1/4"D #225-135 \$85



**W** **Mouette**  
 Evgangeline's favorite pet and best friend! Completely ball-jointed in luminescent resin, 5" tall, hand-painted features and dressed in her favorite removable odorless ensemble. #225-108 \$110



- a** Plum Paces #225-127 \$22  
Shoes to fit vinyl Evgangeline.
- b** Golden Eternity #225-129 \$22  
Shoes to fit resin Evgangeline.
- c** Scarlet Steps #225-122 \$22  
Shoes to fit resin Evgangeline.
- d** Moonlight Pumps #225-115 \$22  
Shoes to fit resin Evgangeline.
- e** Midnight Blue Tappers #225-118 \$22  
Shoes to fit vinyl Evgangeline.



**X** **Evgangeline Display Stand**  
 A display stand created especially for Evgangeline! Features a sturdy base with Evgangeline's name and a saddle-type holder. #225-114 \$15

**Y** **Night Vision**  
 This unique set of acrylic eyes were designed exclusively for Evgangeline Ghastly. Create the look you desire with eyes of Lavender, Green and Brown.  
 #225-107 \$24







**WILDE**  
IMAGINATION™

P.O. Box 1027  
Mullica Hill, NJ 08062

Presort  
Standard  
U.S. Postage  
**PAID**  
Richmond, VA  
Permit #2367



**NEW**

Introducing Valentine ~ the cutest cat you'll ever see! She's Evangeline's newest pet and best friend. Completely ball jointed in luminescent resin, she stands 5" tall, with hand-painted features, inset hazel eyes, and dressed in her favorite removable fashionable ensemble - perfect for those lazy days in the attic. #225-139 \$145



*Evangeline Ghastly*  
*She's a whole other story...*

**NEW Ipswich  
Fog**

Vinyl Evangeline, inset blue eyes\* with applied lashes, with a changeable red wig. She's approximately 17" tall and completely ball jointed, with delicate hand painted features. Her outfit consists of layers of deep grey chiffon, matching lamé underlay, and a lace overlay. A matching high-collared cape, stockings, matching shoes, and designer jewelry completes this stunning look. Designer stand sold separately  
LE 350 #211-116  
\$185



Call Toll Free To Order  
1-866-90-WILDE

M-F 8:30 a.m. to 5:30 p.m. EST  
[www.EvangelineGhastly.com](http://www.EvangelineGhastly.com)