



SPRING 2010



Ellowyn Wilde



Notes from the Couch

My therapist, Dr. Bantam, says I suffer from chronic ennui, with just a touch of melancholy – but I guess I'm just too tired to figure it all out. I'm supposed to write down my thoughts and feelings, but really, what's to feel? I much prefer to go shopping, or spend time with my best friend, Prudence Moody. Dr. Bantam thought it might be good for me to get out with friends, to help escape my ennui...well, for a day...so Prudence and I went to my favorite thrift shops in San Francisco, and it was actually, well, fun. Prudence said she caught me smiling once, but I'm not so sure about that. You can see some of the fun things we purchased on page 17, see Pru's new wigged-out look on page 10, and read about our shopping adventures in my journals and MySpace.com/Ellowyn.

I just hope they're not too, well, boring (sigh)...

Love, Ellowyn

En·nui (on-we) – A feeling of weariness and dissatisfaction.

Our Guarantee: Shop with Confidence with our 100% Guarantee (see order form for details)

Scanty clothes and cheerful grin; Are not the style of Ellowyn



*MISS UNDERSTOOD
and alone in the city
Walking through crowds
and not feeling so pretty;
Then a call from Rufus -
regarding a leak?
Sigh... it's the little things that
get my interests piqued...*

NEW

MISS UNDERSTOOD

Bright red hair Ellowyn with green eyes. Outfit includes chiffon dress with waist ribbon tie, sweater, stockings, shoes, and flower hat accessory. Designer saddle stand included.

#011-145
\$139.00 LE 1000





*I'm ALONE ON SUNDAY
and feeling quite small
No one to talk to and
no one to call;
I'll just sit on my bed
and wait for a friend
And hope my outfit doesn't
get wrinkled again*

NEW

ALONE ON SUNDAY

Dark red hair Ellowyne with brown eyes. Outfit includes peach lace dress with flower decorations, golden tights, matching shoes, arm bands, and designer jewelry. New designer saddle stand included.

#011-142
\$139.00 LE 1000



**WELCOME TO THE WORLD OF
ELLOWYNE WILDE**

She's eternally bored and ready to conquer the doll world...if only she had the energy (sigh...). Designed by renowned fashion doll artist Robert Tonner for Wilde Imagination, Ellowyne stands 16" tall from head to toe. Made of high-quality vinyl and hard plastic, she boasts 12-points of articulation for unlimited posing possibilities. Hand-painted features, rooted saran hair, and designer fabrics are the hallmarks of this temperamental girl.

With a personality as unique as her wardrobe, Ellowyne is definitely the newest doll with a mood.

CALL TOLL FREE TO ORDER
1-866-90-WILDE
M-F 8:30 a.m. to 5:30 p.m. EST
Shop 24/7 at
www.ellowynewilde.com

Ellowyne  *Wilde*



The rain comes down to soothe my soul
 And SAVE ME from my life so droll;
 One cloud, two drops - outside I'll tread
 But wait-I think I'll go back to bed.

SAVE ME

Redhead Ellowyne doll with blue eyes. Outfit includes colorful multi-layered threaded skirt with matching pink tulle, shirt, fully lined embroidered jacket, stockings, shoes, striped gloves, and matching floppy hat. Designer stand included.

#011-121
 \$149.00 LE 500

CALL TOLL FREE TO ORDER
 1-866-90-WILDE
 M-F 8:30 a.m. to 5:30 p.m. EST
 Shop 24/7 at
www.ellowynewilde.com

Dr. Bantam would like to know; why dark clouds follow wherever I go

*I wake in the morning
 with a dash hope
 A smile, some cheer -
 a new way to cope?
 But an hour goes by and
 I still fail to see...
 Maybe Grandmother is right -
 COMPANY LOVES MISERY...*



NEW

COMPANY LOVES MISERY

Dark red hair Ellowyne with brown eyes. Outfit includes embroidered coat, skirt, lace stockings, scarf, hat, muff, and boots. Designer saddle stand included.

#011-139
 \$149.00 LE 500



I'm all dressed up, but woe is me; I guess it's just ennui and tea

*I went shopping with Pru
for some much needed fun
She said a new outfit
was needed and she'd
choose the right one;
From thrift shop
to thrift shop, then some
whipped cream and tea;
And of course a new outfit
(sigh) can you tell
PRUDENCE DRESSED ME?*

NEW

PRUDENCE DRESSED ME

Raven hair Ellowyn with blue eyes. Outfit includes colorful printed top, multi-ruffled skirt, tights, socks, shoes, fun designer jewelry, and two colorful clip-on hair accessories. New designer saddle stand included.

#011-146
\$139.00 LE 1000



INVISIBLE INK

Streaked blonde hair, brown eyes. Outfit includes tiered tulle skirt, belt, top, jacket, matching gauntlet gloves, fishnet stockings, lace-up boots, and designer jewelry. New designer saddle stand included.

#011-129
\$129.00 LE 1000



ELWYNNE IN WHINE

A Modern Doll Debut and now available to you! Blonde hair Ellowyn with blue eyes. Outfit includes burgundy wine gown with intricate lace overlay and shoulder bow, arm gauntlets, stockings, matching shoes, designer jewelry, and hair accessories. New designer saddle stand included.

#011-138
\$139.00 LE 1000



A BON VOYAGE?

Blonde hair Ellowyne with brown eyes. Outfit includes chiffon dress with bottom ruffles and intricate embroidery, matching stockings, strappy shoes, necklace and a fun hair braid design. New designer saddle stand included.

#011-134
\$129.00 LE 1000



SWEETLY SULLEN

Platinum hair Ellowyne with blue-green eyes. Outfit includes ruffled chiffon dress with waist tie, sparkly stockings, strappy shoes, and hair accessory. New designer saddle stand included.

#011-137
\$124.00 LE 1000

Ellowyne  *Wilde*



*UNCOMFORTABLY BLUE
in my outfit so fine
Waiting for someone or
something divine;
Then a feeling of hope
with a ring of the phone...
Alas, a wrong number -
and once again I'm alone.*

NEW

UNCOMFORTABLY BLUE

Brown hair Ellowyne with blue eyes. Outfit includes off-white lace dress with sewn-in lace slip and applied flower decoration, matching cape with satiny bow, striped stockings, blue strappy shoes, and designer jewelry. Designer saddle stand also included.

#011-140
\$135.00 LE 1,000



To brighten up my weary days; I try and dress in different ways

*Dr. Bantam says 'go out -
have fun and a smile;
Let loose and enjoy every
once-in-awhile;' So here...
I sit thinking - then wait
for a sign... But honestly
(sigh) absolutely
NOTHING SPRINGS TO MIND!*

NEW

NOTHING SPRINGS TO MIND

Red hair Ellowyne with green eyes. Outfit consists of designer jeans, shirt, hooded sweater, boots, and designer jewelry. Designer saddle stand also included.

#011-143
\$139.00 LE 1,000



ADRIFT

Redhead Ellowyne doll with green eyes. Outfit consists of striped shirt, pants, jacket with piping and golden buttons, multi-stripped scarf and plaid tennis shoes. New designer saddle stand included.

#011-125
\$139.00 LE 1000



I WAIT ALONE

Red hair Ellowyne with green eyes. Outfit includes lace dress, slip, stockings, lace-up boots, and hair ribbons. New designer saddle stand included.

#011-131
\$139.00 LE 1000

CALL TOLL FREE TO ORDER
1-866-90-WILDE
M-F 8:30 a.m. to 5:30 p.m. EST
Shop 24/7 at
www.ellownewilde.com

Boredom is my greatest foe, I wallow in a well of woe



DESOLATE DREAMS

Red hair Ellowyne, green eyes. Outfit includes burgundy velvet burnout dress with chiffon sleeves and flower decoration, matching stockings, shoes, and designer bracelet. New designer saddle stand included.

#011-135
\$139.00 LE 1,000



MOODY BLUES

A UFDC Debut – and now Available to you! Raven hair Ellowyne doll with blue eyes. Outfit includes blue chiffon dress, lace arm gauntlets, tights, shoes, hair accessory, and designer jewelry. New designer saddle stand included.

#011-130
\$129.00 LE 1000



*I'm planning my day and
feeling quite cheery
A long walk or some
shopping no Ellowyne dreary;
Then I look in the mirror -
adjust my hat just a tad...
But the face peering back
seems MISTAKENLY SAD*

NEW

MISTAKENLY SAD

Dark blonde hair, brown eyes. Outfit consists of pleated coat dress with matching belt, lace-edged slip, hat, and striped stockings. Tall black boots complete this sophisticated and elegant look. Designer display stand also included.

#011-141
\$129.00 LE 1000



I like to think I'm just like you; but E llowyn e says that's just not true

*It seems my life is
meant to be
One filled with hope
and C'EST LA VIE!
I like my life, my
friends, my foes
Who has time for
whipped cream and woes?*

PRUDENCE C'EST LA VIE!

Light blonde hair, blue eyes.
Outfit includes dress, shrug
jacket, arm gauntlets, stockings,
lace-up boots, beret, and
designer jewelry. New
designer saddle stand included.

#021-104
\$129.00 LE 350



CALL TOLL FREE TO ORDER
1-866-90-WILDE
M-F 8:30 a.m. to 5:30 p.m. EST
Shop 24/7 at
www.ellowynewilde.com



RUFUS RUTTER -UNREQUITED

Dark brunette hair, brown eyes. Rufus comes dressed in skinny black jeans, white t-shirt, button down shirt, gray hoodie, and lace-up shoes. Designer stand included. Heart felt pain – optional.

#031-102
\$139.00 LE 500



BRIGHT NIGHTS, BIG CITY

Pale blonde hair, green eyes. Outfit include off-white dress with faux pearl buttons and golden belt, matching off-white jacket, golden arm gauntlets, patterned stockings, shoes, golden headband, and designer jewelry. New designer saddle stand included.

#021-105
\$129.00 LE 350

ESSENTIAL ELLOWYNE TOO COLLECTION

Includes all three of the Essential Ellowynne, Too's-
Blonde, Brunette, and Redhead.

010-110 \$189
A SAVINGS OF OVER \$30

Each Essential Ellowynne, Too comes dressed in a designer two piece set, striped stockings, and lace-up shoes. New designer saddle stand also included.



ESSENTIAL ELLOWYNE,
TOO BRUNETTE
#010-107 \$74.00



ESSENTIAL ELLOWYNE,
TOO REDHEAD
#010-108 \$74.00



ESSENTIAL ELLOWYNE,
TOO BLONDE
#010-106 \$74.00

They say that loneliness
is a sad affair
But for me it's just normal
and I really don't care;
Yet my vanity mirror
confirms a girl so blue
And I just stare at
the image of ESSENTIAL
ELLOWYNE, TOO



Purple and pink
makes me smile
My looks I change every
once in awhile; I never
complain or even pout I'm
ESSENTIAL PRUDENCE,
TOO and totally
WIGGED OUT!



BRIGHT RED WIG



BLONDE WIG

ESSENTIAL PRUDENCE, TOO WIGGED OUT

Essential Prudence, Too Wiggged Out comes dressed in a purple lace outfit with pink flower decoration, pink lace stockings, and shoes. Brown inset eyes with applied lashes, and three separate wigs made of the highest quality fibers are included: Bright Red, Dark Red, and Blonde. They're perfect for changing Prudence's many fun looks. Wigs are even interchangeable with her best friend Ellowynne, Too Wiggged Out – what are best friends for? Designer stand also included.

020-102
\$114.00

For more about Prudence Moody,
Ellowynne's best friend, visit:
www.ellowynnewilde.com

In quiet stillness I surmise... My life so far it lacks surprise

I like to shop and look unique
So other's interest is stirred
and piqued; But alas for me
I tend to pout I'm just
ESSENTIAL ELLOWYNE, TOO
and hopelessly WIGGED OUT



DARK RED WIG



RAVEN WIG



ESSENTIAL ELLOWYNE,
TOO WIGGED OUT

With inset blue eyes and applied lashes, she's definitely our newest Ellowyne with several moods! She comes dressed in a multi-colored body suit, matching tights, and slippers. Three separate wigs made of the highest quality fibers are included - dark red, blonde, and raven wig. A girl can't have too many unique looks! Designer stand also included.

#010-111
\$114.00



WILDE ROSE VANITY & STOOL
Designer vanity is constructed of sturdy wood and resin with a delicately sculpted frame. Lightly stained with tiny roses and leaves surrounding the mirror and base of vanity. Complete with real working drawers for storage and a velvet-covered vanity stool. The perfect place for Ellowyne to reflect.

#015-101
\$110.00

CALL TOLL FREE TO ORDER
1-866-90-WILDE
M-F 8:30 a.m. to 5:30 p.m. EST
Shop 24/7 at
www.ellownewilde.com

Ellowyne Wilde

ELLOWYNE'S CLOSET

Outfits for Ellowyne and Prudence

MY FAVORITE QUOTES

"I can excuse everything but boredom.
Boring people don't have to stay that way."
– Hedy Lamarr

"When people say, 'She's got everything',
I've got one answer - I haven't had tomorrow."
– Elizabeth Taylor

"Whoever said money can't buy happiness
simply didn't know where to go shopping."
– Bo Derek

"Cherish forever what makes you unique,
'cuz you're really a yawn if it goes."
– Bette Midler

"Anyone who lives within their means suffers
from a lack of imagination."
– Oscar Wilde

"Be good and you will be lonely."
– Mark Twain

"For it was not into my ear you whispered,
but into my heart. It was not my lips you
kissed, but my soul."
– Judy Garland

CALL TOLL FREE TO ORDER
1-866-90-WILDE
M-F 8:30 a.m. to 5:30 p.m. EST
Shop 24/7 at
www.ellowynewilde.com

Ellowyne Wilde

My hopes they rise, but always fall; Why bother getting dressed at all?



*While dressed all in red
I think it's quite lame
To sit in the house-would
it be A CRYING SHAME?
Perhaps to the café for
whipped cream and tea
Conversation and fun?
I think I'll bring a
book with me...*

NEW

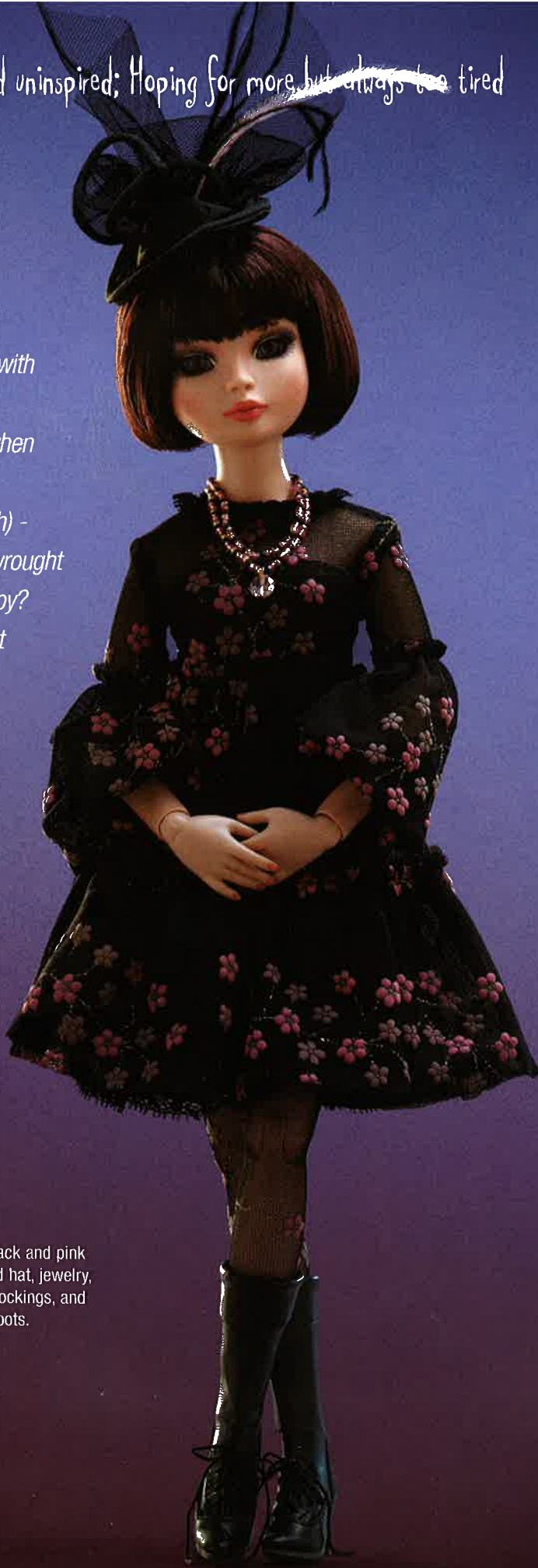
A CRYING SHAME? (outfit only)

Outfit consists of red ruffled dress with blue ruffled slip, lace stockings, socks, matching strappy shoes, hair bows, and designer jewelry.

#013-129
\$69.00 – LE 1000

Sweetly sullen and uninspired; Hoping for more, but always too tired

*I write in my journal with
MULTIPLE TEARS
And punish the rain when
it exposes my fears;
My ennui attitude (sigh) -
it's getting tired and wrought
A new year to be happy?
Oh well...it's a thought*



NEW

**MULTIPLE TEARS
(outfit only)**

Outfit consists of lined black and pink dress, designer decorated hat, jewelry, matching embroidered stockings, and black designer lace-up boots.

#013-126
\$79.00 LE 1000



**GET HAPPY?
(outfit only)**

Outfit consists of embroidered blouse, brightly colored vest, flared skirt, petticoat, belt, tights, shoes, hair bow, and flower decorations.

#013-124
\$79.00 LE 1000



**WRAPPED IN EUNNI
(outfit only)**

Outfit consists of hooded coat, multi-color body suit and matching stockings, button-down vest, skirt, belt, socks and boots.

\$89.00 - LE 500
#013-122



ROYAL PAIN
(outfit only)

Outfit consists of top, print skirt, stockings, belted jacket, and boots

#013-121
\$74.00 LE 500



DREADING DISILLUSION
(outfit only)

Outfit consists of a gold two-tiered pleated skirt, matching belt, appliquéd top, matching stockings, lace shawl, and designer short boots.

#013-118
\$69.00 - LE 1000

My pretty painted house divine; It sits upon the earthquake line



*Dissatisfaction keeps
calling my name
But truly, I know,
I have no one to blame;
I've got to go out -
have fun - yes I should!
But really, the effort
(sigh)...IF ONLY I COULD*

NEW

IF ONLY I COULD
(outfit only)

Outfit consists of flowing chiffon dress, bodysuit, matching stockings, shoes and designer jewelry.

#013-130
\$74.00 - LE 500

I like to shop and look unique; So other's interest is stirred and piqued



*I wake in the morning
with the best of intentions
To smile and have fun,
but then my head
starts to question;
Those BITTERSWEET
memories that keep me
frozen in time, So I stay
in bed dreaming (sigh)
it's not the life
I had in mind...*

NEW

**BITTERSWEET
(outfit only)**

Outfit consists of iridescent dress with beading and long sleeves, ruffled full slip, stockings, matching boots and decorated hat.

#013-127
\$79.00 LE 1000

CALL TOLL FREE TO ORDER
1-866-90-WILDE
M-F 8:30 a.m. to 5:30 p.m. EST
Shop 24/7 at
www.ellownewilde.com



**WONDERING & WANDERING
(outfit only)**

Outfit includes a beautiful iridescent lace layered gown, arm gauntlets, shoes, and designer jewelry.

#013-125
\$74 LE 1000



**NO LONGER AN OPTION
(outfit only)**

Outfit consists of top, sweater, jacket, brocade skirt, tights, and matching lace-up boots.

#013-120
\$74.00 LE 500

ELLOWYNE'S ACCESSORY BOUTIQUE



ELLOWYNE'S DESIGNER TRUNK

It's the perfect place to store all of Ellowyne's outfits and thrift shop separates – and keep them safe from Sybil! Comes complete with beautiful brocade fabrics, tassel, 6 hangers and lots of storage space.

015-118

\$215

WOEFUL THRIFT SHOP COLLECTION

016-123

\$450

A SAVINGS of Over \$100

Includes all 20 Separates shown
So many choices...so little time...



ELLOWYNE'S DESIGNER DRESS FORM

015-119
\$29.00

ELLOWYNE'S THRIFT SHOP SEPARATES

A. Woeful Black Ribbed Top	\$22	016-119	P. Woeful Green Dress	\$32	016-105
B. Woeful Ruffled Tiered Skirt	\$25	016-109	Q. Woeful Black Dress	\$30	016-110
C. Woeful Black Pants	\$25	016-121	R. Woeful Light Tights (set of 3)	\$24	016-111
D. Woeful Bow Blouse	\$22	016-106	S. Woeful Dark Tights (set of 3)	\$24	016-112
E. Woeful Black Tiered Skirt	\$32	016-115	T. Woeful White Tights (set of 3)	\$24	016-113
F. Woeful White Stretch Lace Top	\$22	016-118			
G. Woeful Black Stretch Lace Top	\$22	016-117			
H. Woeful White Tiered Skirt	\$32	016-114			
I. Woeful Ruffled Blouse	\$24	016-107			
J. Woeful Ribbon & Dots Top	\$25	016-116			
K. Woeful Purple Pants	\$24	016-120			
L. Woeful Jacket	\$46	016-122			
M. Woeful Coat	\$46	016-101			
N. Woeful Coral Dress	\$32	016-104			
O. Woeful Gathered Top	\$24	016-108			



CALL TOLL FREE TO ORDER
1-866-90-WILDE
M-F 8:30 a.m. to 5:30 p.m. EST
Shop 24/7 at
www.ellownewilde.com

My spirits wilt just like a rose; My pretty poem is at a close



HOPE
014-115
\$25



DISSATISFACTION
014-124
\$25



REALITY
014-118
\$25



WISHES
014-117
\$25



BORED
014-121
\$25



DREAMS
014-116
\$25



EXPECTATIONS
014-120
\$25



JADED
014-123
\$25

THE COMPLETE MELANCHOLY COLLECTION

Consists of all 8 wigs - \$170
A savings of \$30
#014-125



SYBIL-PLAYING NICE?

Sybil comes to you as one of her more playful personalities. Plush faux fur and hand painted features - band aids not included.

#015-115 - \$24.00

ENNUI SHOE COLLECTION

014-129 all 3 pairs \$63
a Savings of \$10



NEW

- A. A Grey Day \$24.00 014-128
- B. Dark and Moody \$24.00 014-127
- C. A Step Too Far? \$25.00 014-126

MY ENNUI

Poems for the Chronically Bored and Dissatisfied



MY ENNUI

Now you, too, can wallow in a well of woe along with Ellowyne with her beautifully designed book of poetry. My Ennuui is a collection of Ellowyne's favorite poems, beautifully illustrated and written during times of ennui. The perfect book for the chronically bored and dissatisfied collector! - 60 pgs

#015-109
\$20.00

It makes me happy in a strange sort of way
To shop for clothes that others gave away;

A skirt, a jacket, a dress or some tops

Small gifts to me from my favorite THRIFT SHOPS



NEW



NEW



NEW



NEW



NEW



NEW

ENNUI THRIFT SHOP COLLECTION

016-138 \$252

A SAVINGS of Over \$46

Includes all 11 Separates shown above!

- A. Ennuui Yellow vest \$22 016-128
- B. Ennuui Yellow Pants \$24 016-133
- C. Ennuui Purple Print Blouse \$24 016-129
- D. Ennuui Purple Ruffled Skirt \$28 016-131
- E. Ennuui Orange Print Blouse \$24 016-127
- F. Ennuui Pink Ruffled Skirt \$28 016-130
- G. Ennuui Green Ruffled Skirt \$28 016-134
- H. Ennuui Green Print Blouse \$24 016-135
- I. Ennuui Green Jacket \$38 016-136
- J. Ennuui Pink Pants \$24 016-132
- K. Ennuui Blue Satin Jacket \$38 016-137

Ellowyne Wilde

Evangeline Ghastly®

She's a whole other story...

NEW



AK

NEW



BB

Born: April 24, 1924

Place of Birth: Ipswich, England
(to the attic of Barkley Manor)

The weather on the night of Evangeline's birth was as expected. The wind was howling, the moon was full, and the doctor was unavailable.

And so begins the story of Evangeline Ghastly. Where most call her unfortunate; she thinks of herself as misunderstood. Beginning with a mysterious diary entry, a pet skunk named Mouette, and fashions straight out of a Victorian novel, Evangeline is definitely... *a whole other story!*

Created by designer Joe Petrollese and sculpted by renowned fashion doll artist Robert Tonner, Evangeline is crafted entirely of the finest pale luminescent resin, and now in the highest-quality vinyl too.

Completely ball-jointed, she comes complete with hand-painted features and a designer wardrobe befitting any mortician's assistant.

Evangeline comes to you straight from the attic of Barkley Manor in Ipswich, England, across from the local cemetery, prepared to share her quirky tales, unique fashion sense, and mysterious life in one of the oldest towns in England.

You can find out more about Evangeline Ghastly, view her designer fashions, and read her diary entries at:

www.EvangelineGhastly.com
and
www.MySpace.com/evangelineghastly

K Waiting for Mortimer **NEW**

Vinyl Evangeline, inset blue eyes applied lashes, dark brown rooted hair. Approx. 17" tall, completely ball-jointed, with delicate hand painted features. Dressed in a beautiful stretch velvet dress, arm gauntlets, intricate beading and fringe details. Stockings, designer jewelry, and black satin shoes. LE 350 #211-104 \$175

B Visiting Frogmore **NEW**

Vinyl Evangeline, inset aqua blue eyes with applied lashes, dark brown rooted hair. Approx. 17" tall and completely ball-jointed, with delicate hand painted features. Dressed in a stunning chiffon overlay dress with a matching royal collar, stockings, designer jewelry, and the perfect matching shoes. LE 350 #211-103 \$175

C Eternal Evangeline

Vinyl Evangeline, inset dark violet eyes, rooted black hair. Approx. 17" tall, completely ball-jointed. She comes dressed in a black satin cami with attached lace ruffle petti-pant, thigh high stockings with garters, and matching pumps. #210-101 \$135

D Eternal Evangeline, Too

Vinyl Evangeline, inset grey-green eyes, platinum changeable wig. Approx. 17" tall, completely ball-jointed. She comes dressed in a black satin cami with attached lace ruffle petti-pant, thigh high stockings with garters, and matching pumps. #210-102 \$135

E Evangeline Ghastly® Grave Concerns

Crafted of high-quality, pale luminescent resin with delicate hand-painted features. She stands almost 19" tall and is completely ball-jointed. Piercing inset grey/blue eyes that are changeable, and a long black wig with a white stripe. Dressed in a black lace camisole, stockings, and shoes to complete her midnight look. A separate long black wig with purple bangs, and designer metallic mesh robe are also included.

Limited Edition of 350 #221-104 \$399

CALL TOLL FREE TO ORDER
1-866-90-WILDE
M-F 8:30 a.m. to 5:30 p.m. EST
www.EvangelineGhastly.com



NEW KA Cold Wind (outfit only)

This stretch velvety gown trimmed in gold gives Evangeline comfort during her winter strolls through Ipswich. Faux fur trimmed sleeves with matching lace, stockings, and designer jewelry complete the look. *Note: Outfit fits both resin and vinyl Evangeline - Shoes sold separately, see pg. 23. Limited Edition of 300 #223-116 \$90*

NEW B Widow's Walk (outfit only)

A stunning fully lined, black floor-length gown with matching chiffon overlay. The gown features a lace-up front bodice and halter-style neckline. A coordinating paisley printed floor length pleated coat with lavender lining and dramatic sleeves completes the look. *Note: Outfit fits both resin and vinyl Evangeline - Shoes sold separately, see pg. 23. LE 300 #223-119 \$110*

C Dearly Departed (outfit only)

This stunning red and black outfit features a fully lined black jacket with dramatic collar, chiffon sleeves, and decorative beading. The fully lined dress is fitted and features a beautiful embroidered front and chiffon bottom. Stockings, matching black shoes, and a Victorian-inspired necklace and earring set completes the look. An outfit for work, or for catching a certain someone's eye? *Fits Vinyl Evangeline Only. LE 300 #213-101 \$90*

D Everlasting Envy (outfit only)

This designer outfit consists of a beautiful green taffeta dress trimmed in black ribbon with a black mesh overlay, matching hat, and shoes. Perfect for walking Bella, leading a parade, or just enjoying a loud thunderstorm. Fits both resin and vinyl Evangeline Ghostly. *Note: Shoes fit resin Evangeline. LE 300 #223-115 \$108*

E Eternal Beauty? (outfit only)

Outfit features a black polka dot brocade cut-away coat with faux fur collar and cuffs. Ivory ruffled blouse with attached ruffled lace petti-slip. Black lacey tights and black boots. A matching velvet top hat and walking stick completes the look. Strolling through town, Evangeline never looked so good. *Fits both resin and vinyl Evangeline - Limited Quantities Available. LE 300 #223-113 \$125*



NEW

Evangeline's Attic Separates -
Evangeline spends most of her time alone in the attic of Barkley Manor, but she doesn't mind at all. A self-taught seamstress, she sews her beautiful outfits and separates, and wears them wherever she goes... whether visiting relatives in the cemetery, or just walking through town. Separates are interchangeable between both the vinyl and resin Evangelines!

- 1 Dawn to Dusk Robe #226-117 \$58
- 2 Beyond Sunset Coat #226-119 \$62
- 3 Dawn to Dusk Top #226-123 \$35
- 4 Dawn to Dusk Skirt #226-124 \$42
- 5 Neverending Blouse #226-121 \$48
- 6 Neverending Lace Skirt #226-114 \$58
- 7 Beyond Sunset Coat Dress #226-118 \$58
- 8 Eternal Ribbon Skirt #226-116 \$58
- 9 Dawn to Dusk Coat #226-120 \$62
- 10 Dawn to Dusk Trimmed Coat #226-122 \$48
- 11 Eternal Lace Skirt #226-115 \$58
- 12 A Windy Evening #226-126 \$48
- 13 Eternal Tulle Skirt Set #226-127 \$46
- 14 Eternal Purse #226-125 \$25
- 15 Beyond Sunset Purse #226-128 \$25



Attic Collection, Too
Includes all 15 New Attic Separates
#226-129 \$599
A SAVINGS of Over \$130!
-*-
Please visit www.EvangelineGhastly.com
to see Evangeline's beautiful
Attic Collection I!

CALL TOLL FREE TO ORDER
1-866-90-WILDE
M-F 8:30 a.m. to 5:30 p.m. EST
www.EvangelineGhastly.com

Evangeline's Wigs

Change Evangeline's look with these five unique wigs, each of the highest quality fibers and made exclusively for both resin and vinyl Evangeline!

- 1 Ebony Epitaph #225-105 \$20
- 2 Moon Glow #225-104 \$25
- 3 Windblown #225-103 \$25
- 4 Pallid Whispers #225-124 \$25
- 5 Evening Flame #225-125 \$25
- 6 After Sunset #225-130 \$25

NEW

Dark Night Wig Collection

Includes wigs 1, 2 & 3

#225-106 \$57

A SAVINGS OF \$13

Evangeline's Accessories

NEW
A Cover of Darkness Cape #223-118 \$62

B Midnight Blue Coat #226-104 \$50

C Midnight Coat #226-103 \$58

D Mouette

Evangeline's favorite pet and best friend!

Completely ball-jointed in luminescent resin, 5" tall, hand-painted features and dressed in her favorite removable odorless ensemble.

#225-108 \$110

F Bella

Bella is the cutest bat you'll ever want in your attic! She's made of high-quality resin and completely ball-jointed with inset eyes. Outfit is a sparkly bat suit with hood, attached hair, bat wing sleeves, and shoes with ribbon laces.

#225-119 \$110

CALL TOLL FREE TO ORDER

1-866-90-WILDE

M-F 8:30 a.m. to 5:30 p.m. EST

www.EvangelineGhastly.com



F Evangeline's Attic Armoire

The perfect place for all of Evangeline's designer outfits, separates, and shoes! This beautiful Victorian-inspired armoire is big enough for Evangeline, her outfits and accessories. There's even a spot for Mouette and Bella in one of the drawers. Comes complete with six hangers. #225-126 \$225

a Plum Paces #225-127 \$22 **NEW**

Shoes to fit vinyl Evangeline.

b Bow Ties #225-128 \$22 **NEW**

Shoes to fit vinyl Evangeline.

b Bow Ties II #225-131 \$22 **NEW**

Shoes to fit resin Evangeline.

c Golden Eternity #225-129 \$22 **NEW**

Shoes to fit resin Evangeline.

c Golden Eternity II #225-132 \$22 **NEW**

Shoes to fit vinyl Evangeline.

d Scarlet Steps #225-122 \$22

Shoes to fit resin Evangeline.

e A Dark Sole #225-123 \$25

Boots to fit vinyl Evangeline.

f Crimson Lace-Ups #225-117 \$25

Boots to fit vinyl Evangeline.

g Midnight Blue Tappers #225-118 \$22

Shoes to fit vinyl Evangeline.

h Moonlight Pumps #225-115 \$22

Shoes to fit resin Evangeline.

i Midnight Lace-Ups #225-116 \$25

Boots to fit resin Evangeline.

i Ipswich Lace-Ups #225-111 \$25

Boots to fit resin Evangeline.

k Tombstone Tappers #225-113 \$22

Shoes to fit resin Evangeline.

G Evangeline Display Stand

A display stand created especially for Evangeline! Features a sturdy base with Evangeline's name and a saddle-type holder. #225-114 \$15

H Night Vision

This unique set of acrylic eyes were designed exclusively for Evangeline Ghostly. Create the look you desire with eyes of Lavender, Green and Brown. #225-107 \$24



D

F



F



e



i



NEW

a



NEW

b



NEW

c



d



f



g



h



i



k



H



WILDE
IMAGINATION™

P.O. Box 1027
Mullica Hill, NJ 08062

Presort
Standard
U.S. Postage
PAID
Richmond, VA
Permit #2367



Evangeline Ghastly
She's a whole other story...

NEW

DEAR DIARY [outfit & wig only]

Outfit includes a lined, black lace gown with chiffon overskirt and sequined bodice, faux-fur trimmed jacket with silver lining and embellished trim, and designer jewelry. Strappy shoes, sheer hose, and a long black wig with silver-white stripes completes the gothic look.

Note: Outfit and wig are interchangeable between both resin and vinyl Evangelines - Shoes fit resin only. (Outfit shown on "Grave Concerns", see page 19.) Limited Edition of 300 #223-119 \$110

CALL TOLL FREE TO ORDER
1-866-90-WILDE
M-F 8:30 a.m. to 5:30 p.m. EST
www.EvangelineGhastly.com